

# A38E

## ELECTRIC ARTICULATING BOOM LIFT



- Industry leading electric articulating boom lift
- Lightweight, durable & reliable
- Smooth, easy-to-use controls
- Compact chassis for excellent maneuverability
- Suitable for indoor/outdoor applications

 **snorkel**<sup>™</sup>

[www.snorkellifts.com](http://www.snorkellifts.com)

# ELECTRIC ARTICULATING BOOM LIFT

# A38E

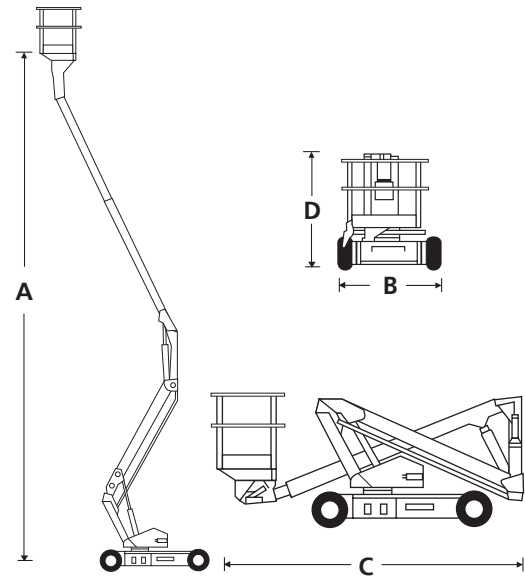
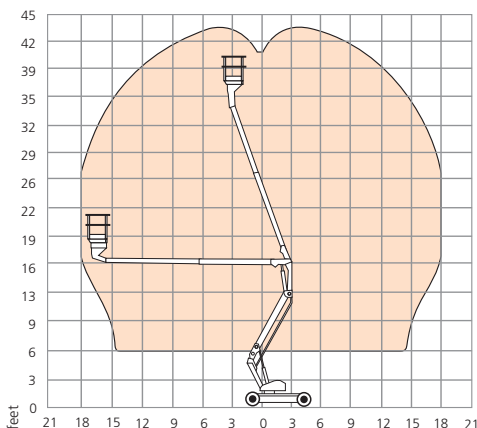
DIMENSIONS	A38E
Max. Working Height	13.0m
Max. Platform Height (A)	11.0m
Max. Horizontal Reach	6.1m
Clearance Height @ Max. Outreach	5.4m
Platform Size	0.72m x 1.2m
Overall Length (C)	4.1m
Overall Width (B)	1.50m
Stowed Height (D)	2.0m
Ground Clearance	0.12m

PERFORMANCE	
Platform Capacity	215kg
Max. Drive Height	11.0m
Max. Wind Speed	12.5m/s
Max. Drive Speed (Stowed-Fwd.)	0.83m/s (3kph)
Max. Drive Speed (Stowed-Rev.)	0.76m/s (2.7kph)
Max. Drive Speed (Elevated-Fwd.)	0.1m/s (0.36kph)
Max. Drive Speed (Elevated-Rev.)	0.09m/s (0.3kph)
Gradeability	36%
Platform Rotation	90° (+45°/-45°)
Superstructure Rotation (Non-continuous)	360°
Tailswing (Riser-boom Elevated)	0.0m
Tailswing (Riser-boom Stowed)	1.08m
Inside Turning Radius	1.12m
Outside Turning Radius	2.4m
Raise / Lower Time	60 / 54 seconds
Tyres (Non-marking rubber)	22 x 9-16
Controls	Proportional
Drive System	Direct DC drive

POWER	
Power Source	(8) 6V 220Ah batteries

WEIGHT	
Weight	3,843kg

## WORKING ENVELOPE



## STANDARD FEATURES

- Snorkel Guard™ secondary guarding system
- Hydraulic platform rotation
- Direct DC drive series wires wheel motors
- Proportional one-handed controls
- Ultra-tight inside turning radius
- Minimal front boom overhang
- 2 person indoor
- 1 person outdoor
- Non-marking tyres
- Power line to platform
- Duplicate boom controls at ground level
- Hour meter & on-board diagnostics display
- Tilt alarm & cut out
- 2-year parts & labour warranty
- 5-year structural warranty
- CE approved

## OPTIONS

- Environmental hydraulic oil
- Custom paint colours
- Snorkel OnSite™ telematics
- Flashing amber light
- AGM Battery (Machine Weight 3,880kg)

**snorkel**

Vigo Centre, Birtley Road,  
Washington, Tyne & Wear,  
NE38 9DA, U.K.

Tel: +44 (0) 845 1550 057

Email:

sales.emea@snorkellifts.com

www.snorkellifts.com