



SOLID
TO SUCCEED



ARTICULATED BOOM LIFT

XGA48K

Comply with CE

Standard configuration

- 2.4m × 0.9m work platform
- 300/460kg platform load capacity
- 160° platform rotation
- Articulated boom swing function
- 12 V DC auxiliary power
- Cold start components
- Engine air pre-filter kit
- Engine condition monitoring and start protection device
- 4-wheel drive (standard)
- Two wheel steering, four wheel steering, crab steering
- Lowering and moving alarm
- Tilt alarm
- Horn
- Emergency stop of platform and chassis
- Emergency power unit
- 4-wheel braking system
- Self-leveling platform
- Proportional joystick control
- Drive enable
- Hourmeter
- Lockable engine house
- 360° turntable rotation
- Active defense protection system
- Hydraulic oil cooler
- Thumb rocker steering



Working height
48.7 meters



Lift capacity
300/460Kg



Diesel
power



Optional configuration

- Operator anti-crushing protection system
- Working light assembly
- Hydraulic generator
- Air pipe

XCMG FIRE-FIGHTING SAFETY EQUIPMENT CO.,LTD

XGA48K



SOLID
TO SUCCEED

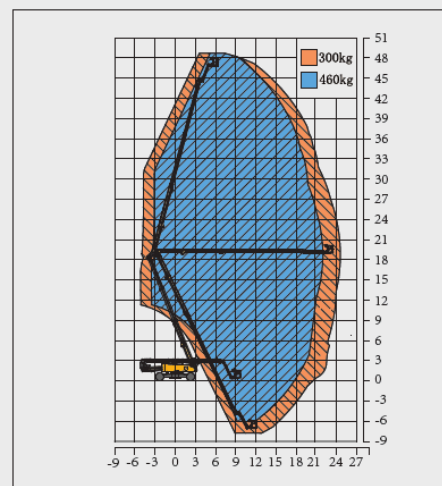
Articulated Boom Lift-Engine Powered

Item	Metric	
Dimension		
Overall dimension - stowed state	Length	12940mm
	Width	2490mm
	Height	3200mm
Overall dimension - transportation	Length	12030mm
	Width	2490mm
	Height	3200mm
Platform dimension	Length	2400mm
	Width	900mm
	Height	1150mm
Wheelbase (axle retracted/axle extended)	5220mm/4590mm	
Overall width (axle retracted/axle extended)	2490mm/5030mm	
Fly jib length	2540mm	
Min. ground clearance	430mm	

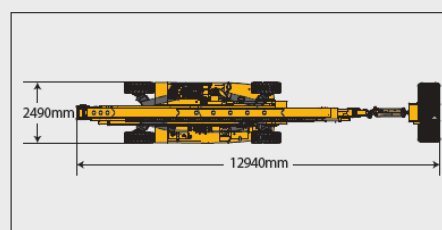
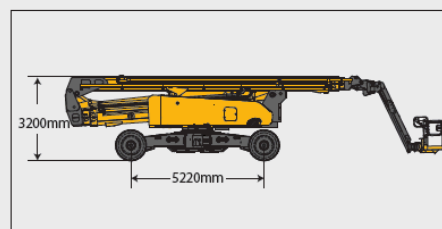
Performance	
Max. working height	48.7m
Max. platform height	46.7m
Max. working range	24.5m
Max. up and over clearance	18.9m
Max. down probing depth	7.5m
Max. lift capacity	300kg(unlimited)/460kg(limited)
Max. number of occupants	3
Max. working slope	X-5°/Y-5°
1st boom luffing range	-4°~ +78°
2nd boom luffing range	-64°~ +75°
Fly jib luffing range	-65°~ +66°
Turntable rotation	360°
Platform rotation	160°
Total weight	27380kg
Driving speed (stowed)	4.5km/h
Driving speed (raised or extended)	0.5km/h
Min. turning radius-axle retracted (inside/outside)	13810 mm /17140 mm (2) 7100 mm /9500 mm (4)
Min. turning radius-axle extended (inside/outside)	2800 mm /9200 mm (2) 2300 mm /6600 mm (4)
Turntable tailswing (axle retracted/axle extended)	3900mm/2630mm
Max. gradeability	40% (22°)

Power source	
Control	12V DC proportional control
Emergency power supply	12V/2×220Ah
Engine model	Cummins F3.8
Engine power	75kW(2200r/min)
Max. engine torque	500N·m
Engine emission standard	EU V
Hydraulic tank capacity	420L
Fuel tank capacity	210L

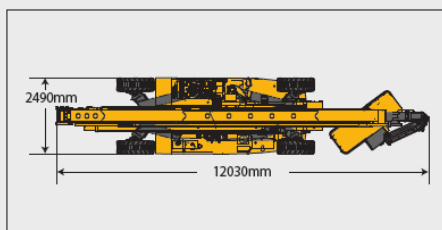
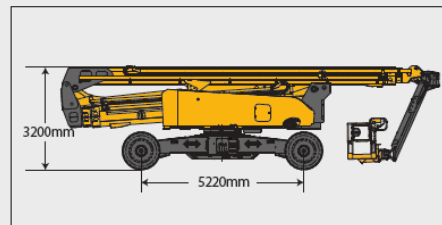
Tire	
Tire size	1162mm×445mm
Tire ground pressure	10kg/cm ²
Driving wheels	4
Braking wheels	4
Steering wheels	4



Stowed



Trans



The print does not belong to the contract, nor a part of the commercial contract. We reserve the right to revise the product model, parameters, configuration based on the continuous improvement requirements of the product, without prior notice. Pictures are for reference only, and the specific product shall depend on the real product. The final interpretation rights belong to XCMG.