

SELF-PROPELLED ROUGH-TERRAIN SCISSOR LIFTS

OPERATOR'S MANUAL

with Maintenance Information

(For JCPT2223RTA)



WARNING

THE MANUFACTURER SHALL NOT BE HELD LIABLE IN CASE OF FAULTS OR ACCIDENTS DUE TO NEGLIGENCE, INCAPACITY, INSTALLATION BY UNQUALIFIED TECHNICIANS AND IMPROPER USE OF THE MACHINE

DO NOT OPERATE THIS MACHINE UNTIL YOU READ AND UNDERSTAND ALL THE DANGERS, WARNINGS AND CAUTIONS IN THIS MANUAL

Part Number: SM0117123



Zhejiang Dingli Machinery Co., Ltd.

First Edition, September 2017

Version of the Record

Version of the Record

Version of the Record

Version Number

Create Date

SM01117123_Rev1.0 2017-09

Important

Read, understand and obey these safety rules and operating instructions before operating this machine.

Only trained and authorized personnel shall be permitted to operate this machine. This manual should be considered a permanent part of your machine and should remain with the machine at all times. If you have any questions, please call DINGLI Machinery.

Contents

	Page
Safety Rules	1
Legend	8
Decals	9
Specifications	13
Control panel	14
Pre-operation Inspection	18
Workplace Inspection	20
Function Tests	21
Operating Instructions	27
Transport and Lifting Instructions	34
Maintenance	37
Schematic	64
Inspection and Repair Log	68

Owners, Users and operators:

We appreciate your choice of our machine for your application. Our number one priority is user safety, which is best achieved by our joint efforts. We feel that you make a major contribution to safety if you, as the equipment users and operators:

- 1 Comply with employer, job site and governmental rules.
- 2 Read, understand and follow the instructions in this and other manuals supplied with this machine.
- 3 Use good safe work practices in a commonsense way.
- 4 Only have trained / certified operators, directed by informed and knowledgeable supervision, running the machine.

If there is anything in this manual that is not clear or which you believe should be added, please contact us.

Contact us:

Zhejiang Dingli Machinery Co., Ltd.

1255 Baiyun South Road. Leidian Town.
Deqing Zhejiang

China

Tel: +86-572-8681688

Fax: +86-572-8681690

Web: www.cndingli.com

E-mail: market@cndingli.com

Safety Rules



Danger

Failure to obey the instructions and safety rules in this manual will result in death or serious injury.

Do Not Operate Unless:

- ☒ You learn and practice the principles of safe machine operation contained in this operator's manual.
 - 1 **Avoid hazardous situations.**
Know and understand the safety rules before going on to the next section.
 - 2 Always perform a pre-operation inspection.
 - 3 Always perform function tests prior to use.
 - 4 Inspect the workplace.
 - 5 Only use the machine as it was intended.
- ☒ You read, understand and obey the manufacturer's instructions and safety rules— safety and operator's manuals and machine decals.
- ☒ You read, understand and obey employer's safety rules and worksite regulations.
- ☒ You read, understand and obey all applicable governmental regulations.
- ☒ You are properly trained to safely operate the machine.

Decal Legend

DINGLI product decals use symbols, color coding and signal words to identify the following:



Safety alert symbol—used to alert personnel to potential personal injury hazards. Obey all safety messages that follow this symbol to avoid possible injury or death.

⚠ DANGER Red—used to indicate the presence of an imminently hazardous situation which, if not avoided, will result in death or serious injury.

⚠ WARNING Orange—used to indicate the presence of a potentially hazardous situation which, if not avoided, could result in death or serious injury.

⚠ CAUTION Yellow with safety alert symbol—used to indicate the presence of a potentially hazardous situation which, if not avoided, may cause minor or moderate injury.

NOTICE Blue without safety alert symbol—used to indicate the presence of a potentially hazardous situation which, if not avoided, may result in property damage.

Safety Rules

The relevant conditions of using the equipment

The surface of work ground should be flat and hard with no obstacles in air and the safety distance between the equipment and high-tension line is adequate.

The environment temperature should be within $-20^{\circ}\text{C}\sim 40^{\circ}\text{C}$; Height above sea level $\leq 1000\text{m}$.

The environment humidity $\leq 90\%$.

Electrical power: AC $110\sim 230\text{V}\pm 10\%$, $50\sim 60\text{Hz}$.

Work cycle

The life of designed work cycle is no more than 40000 times.

Intended Use

This machine is intended to be used only to lift personnel, along with their tools and materials to an aerial work site.

Safety Sign Maintenance

Replace any missing or damaged safety signs. Keep operator safety in mind at all times. Use mild soap and water to clean safety signs. Do not use solvent-based cleaners because they may damage the safety sign material.

Operator

Only the trained and qualified are permitted to operate this machine. Always use safety belt and helmet when aurally working.

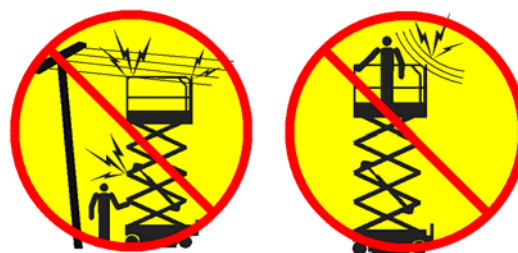
If you are subject to dizziness or seizures, or are bothered by heights, you must not operate this type of machinery.

An operator must not use drugs or alcohol that can change his/her alertness or coordination.

An operator on prescription or over-the-counter drugs needs medical advice on whether or not he/she can safely operate machines.

⚠ Electrocution Hazard

This machine is not electrically insulated and will not provide protection from contact with or proximity to electrical current.



Maintain safe distances from electrical power lines and apparatus in accordance with applicable governmental regulations and the following chart.

Voltage Phase to Phase	Minimum Safe Approach Distance Meters
0 to 300V	Avoid Contact
300V to 50kV	3.05
50kV to 200kV	4.60
200kV to 350kV	6.10
350kV to 500kV	7.62
500kV to 750kV	10.67
750kV to 1000kV	13.72

Allow for platform movement, electrical line sway or sag and beware of strong or gusty winds.

Keep away from the machine if it contacts energized power lines. Personnel on the ground or in the platform must not touch or operate the machine until energized power lines are shut off.

Safety Rules

Do not operate the machine during lightning or storms.

Do not use the machine as a ground for welding.

Tip-over Hazard

Occupants, equipment and materials must not exceed the maximum platform capacity or the maximum capacity of the platform extension.


Maximum capacity – JCPT2223RTA

Maximum occupants 4

Models with one extension deck

Platform allowable maximum load 750kg

Extension deck allowable maximum load 500kg

Only		Only
Extension		platform
deck		
500kg		250kg

Work Area Safety

Do not raise the platform unless the machine is on a firm, level surface.

Do not drive over 0.5km/h with the platform raised.



Do not depend on the tilt alarm as a level indicator. The tilt alarm sounds on the chassis and in the platform when the machine is on a slope.

If the tilt alarm sounds:

Lower the platform. Move the machine to a

firm, level surface. If the tilt alarm sounds when the platform is raised, use extreme caution to lower the platform.

For outdoor use machine, Do not raise the platform when wind speeds may exceed 12.5 m/s. If wind speeds exceed 12.5 m/s when the platform is raised, lower the platform and do not continue to operate the machine.

Do not operate the machine in strong or gusty winds. Do not increase the surface area of the platform or the load. Increasing the area exposed to the wind will decrease machine stability.



Do not use the platform controls to free a platform that is caught, snagged or otherwise prevented from normal motion by an adjacent structure. All personnel must be removed from the platform before attempting to free the platform using the ground controls.

Use extreme care and slow speeds while driving the machine in the stowed position across uneven terrain, debris, unstable or slippery surfaces and near holes and drop-offs.

Do not drive the machine on or near uneven terrain, unstable surfaces or other hazardous conditions with the platform raised.

Do not push off or pull toward any object outside of the platform.



Safety Rules

Maximum allowable manual force

Model	Application	manual force	Maximum occupants
JCPT2223RTA	Outdoor	400N	4
	Indoor	400N	4

Do not use the machine as a crane.

Do not place or attach fixed or overhanging loads to any part of this machine.

Do not push the machine or other objects with the platform.

Do not contact adjacent structures with the platform.

Do not alter or disable the limit switches.

Do not tie the platform to adjacent structures.

Do not place loads outside the platform perimeter.



Do not alter or disable machine components that in any way affect safety and stability.

Do not replace items critical to machine stability with items of different weight or specification.

Do not modify or alter an aerial work platform without prior written permission from the manufacturer. Mounting attachments for holding tools or other materials onto the platform, toe boards or guard rail system can increase the weight in the platform and the surface area of the platform or the load.

Do not place ladders or scaffolds in the platform or against any part of this machine.

Do not transport tools and materials unless they are evenly distributed and can be safely

handled by person(s) in the platform.

Do not use the machine on a moving or mobile surface or vehicle.

Be sure all tires are in good condition, air-filled tires are properly inflated and lug nuts are properly tightened.

⚠️ Crushing Hazard

Keep hands and limbs out of scissors.

Keep hands clear when folding rails.

Use common sense and planning when operating the machine with the controller from the ground. Maintain safe distances between the operator, the machine and fixed objects.

Maintain a firm grasp on the platform rail when removing the rail pins. Do not allow the platform guard rails to fall.

⚠️ Operation on Slopes Hazard

Do not drive the machine on a slope that exceeds the slope and side slope rating of the machine.

Slope rating applies to machines only in the stowed position.

Model	Maximum slope rating stowed position	Maximum side slope rating stowed position
JCPT2223RTA	30% (17°)	25% (14°)

Note: Slope rating is subject to ground conditions and adequate traction.

⚠️ Fall Hazard

The guard rail system provides fall protection. During operation, occupants in the platform must wear a full body harness with a lanyard attached to an authorized lanyard anchorage point. Attach only one (1) lanyard per lanyard anchorage point.

Safety Rules



Do not sit, stand or climb on the platform guard rails. Maintain a firm footing on the platform floor at all times.



Do not climb down from the platform when raised.

Keep the platform floor clear of debris.

Close the entry gate before operating.

Do not operate the machine unless the guard rails are properly installed and the entry is secured for operation.

Do not enter or exit the platform unless the machine is in the stowed position.

⚠ Collision Hazard



Be aware of limited sight distance and blind spots when driving or operating.

Be aware of extended platform position(s) when moving the machine.

Check the work area for overhead obstructions or other possible hazards.



Be aware of crushing hazards when grasping the platform guard rail.

Operators must comply with employer, job site and governmental rules regarding use of personal protective equipment.

Observe and use color-coded direction arrows on the platform controls and platform decal plate for drive and steer functions.

Do not operate a machine in the path of any crane or moving overhead machinery unless the controls of the crane have been locked out and/or precautions have been taken to prevent any potential collision.

No stunt driving or horseplay while operating a machine.

Do not lower the platform unless the area below is clear of personnel and obstructions.



Limit travel speed according to the condition of the ground surface, congestion, slope, location of personnel, and any other factors which may cause collision.

⚠ Component Damage Hazard

Do not use any battery or charger greater than 12V to jump-start the engine.

Do not use the machine as a ground for welding.

⚠ Explosion and Fire Hazard

Do not start the engine if you smell or detect liquid petroleum gas (LPG), gasoline, diesel fuel or other explosive substances.

Safety Rules

Do not refuel the machine with the engine running.

Refuel the machine and charge the battery only in an open, well-ventilated area away from sparks, flames and lighted tobacco.

Do not operate the machine in hazardous locations or locations where potentially flammable or explosive gases or particles may be present.

Do not spray ether into engines equipped with glow plugs.

⚠ Damaged Machine Hazard

Do not use a damaged or malfunctioning machine.

Conduct a thorough pre-operation inspection of the machine and test all functions before each work shift. Immediately tag and remove from service a damaged or malfunctioning machine.

Be sure all maintenance has been performed as specified in this manual. Be sure all decals are in place and legible.

Be sure the operator's manual is complete, legible and in the storage container located in the platform.

⚠ Bodily Injury Hazard

Always operate the machine in a well-ventilated area to avoid carbon monoxide poisoning.

Do not operate the machine with a hydraulic oil or air leak. An air leak or hydraulic leak can penetrate and/or burn skin.

Improper contact with components under any cover will cause serious injury. Only trained maintenance personnel should access compartments. Access by the operator is only

advised when performing a pre-operation inspection. All compartments must remain closed and secured during operation.

⚠ Outrigger Safety

Do not lower the outriggers unless the machine is on a firm surface. Avoid drop-offs, holes, unstable or slippery surfaces and other possible hazardous conditions.

When the auto level function is not being used and the outriggers are being lowered individually, the steer-end outriggers must be lowered first.

Do not raise the platform unless the machine is level. Do not set the machine up on a surface where it cannot be leveled using only the outriggers.

Do not raise the platform unless all four outriggers are properly lowered, the footpads are in firm contact with the ground and the machine is level.

Do not adjust the outriggers while the platform is raised.

Do not drive while the outriggers are lowered.

⚠ Battery Safety

⚠ Burn Hazard



Batteries contain acid. Always wear protective clothing and eye wear when working with batteries.

Avoid spilling or contacting battery acid. Neutralize battery acid spills with baking soda and water.

Safety Rules

⚠ Explosion Hazard



Keep sparks, flames and lighted tobacco away from batteries. Batteries emit explosive gas.

⚠ Electrocution/ Hazard

Avoid contact with electrical terminals.

⚠ pollute Hazard

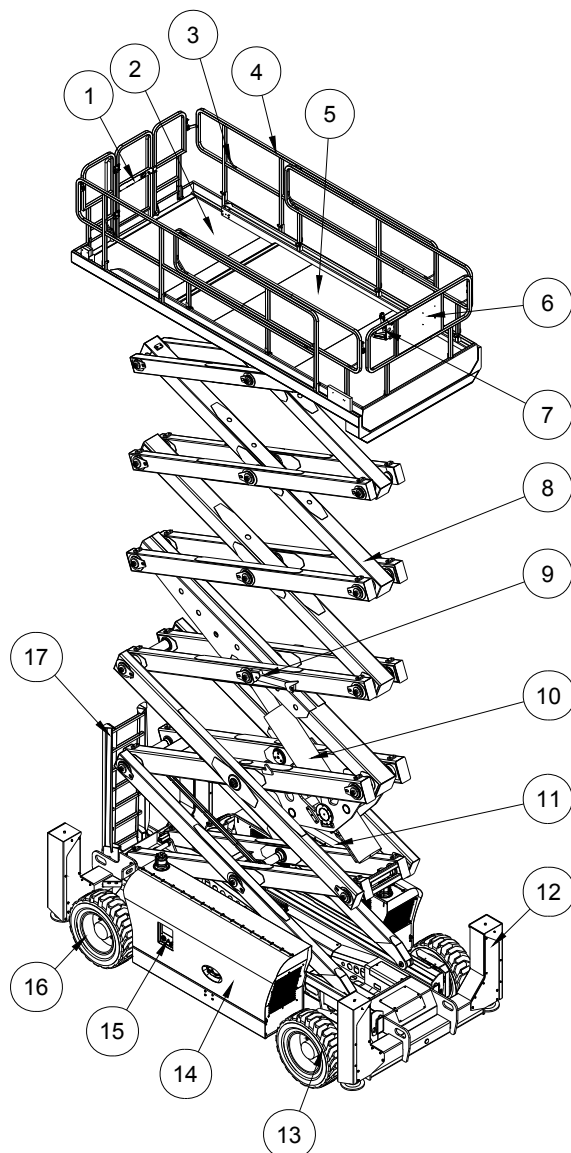
Dispose of old battery must comply with job site and governmental rules.

Lockout after Each Use

- 1 Select a safe parking location - firm level surface, clear of obstructions and traffic.
- 2 Lower the platform.
- 3 Turn the key switch to the off position and remove the key to secure from unauthorized use.
- 4 Chock the wheels.

Legend

Legend



1 Platform entry gate

2 Main Platform

3 Lanyard anchorage point

4 Platform guard rails

5 Platform extensions

6 Manual storage containers

7 Platform controls

8 Scissor Arms

9. Safety arm

10 Lift Cylinder

11 Engine(behind cover)

12 Outrigger

13 Front wheel

14 Hydraulic tanks、 Fuel tanks (behind cover)

15 Ground controls

16 Rear wheel

17. Entry ladder

Decals**Decal Inspection**

Use the pictures on the next page to verify that all decals are legible and in place.

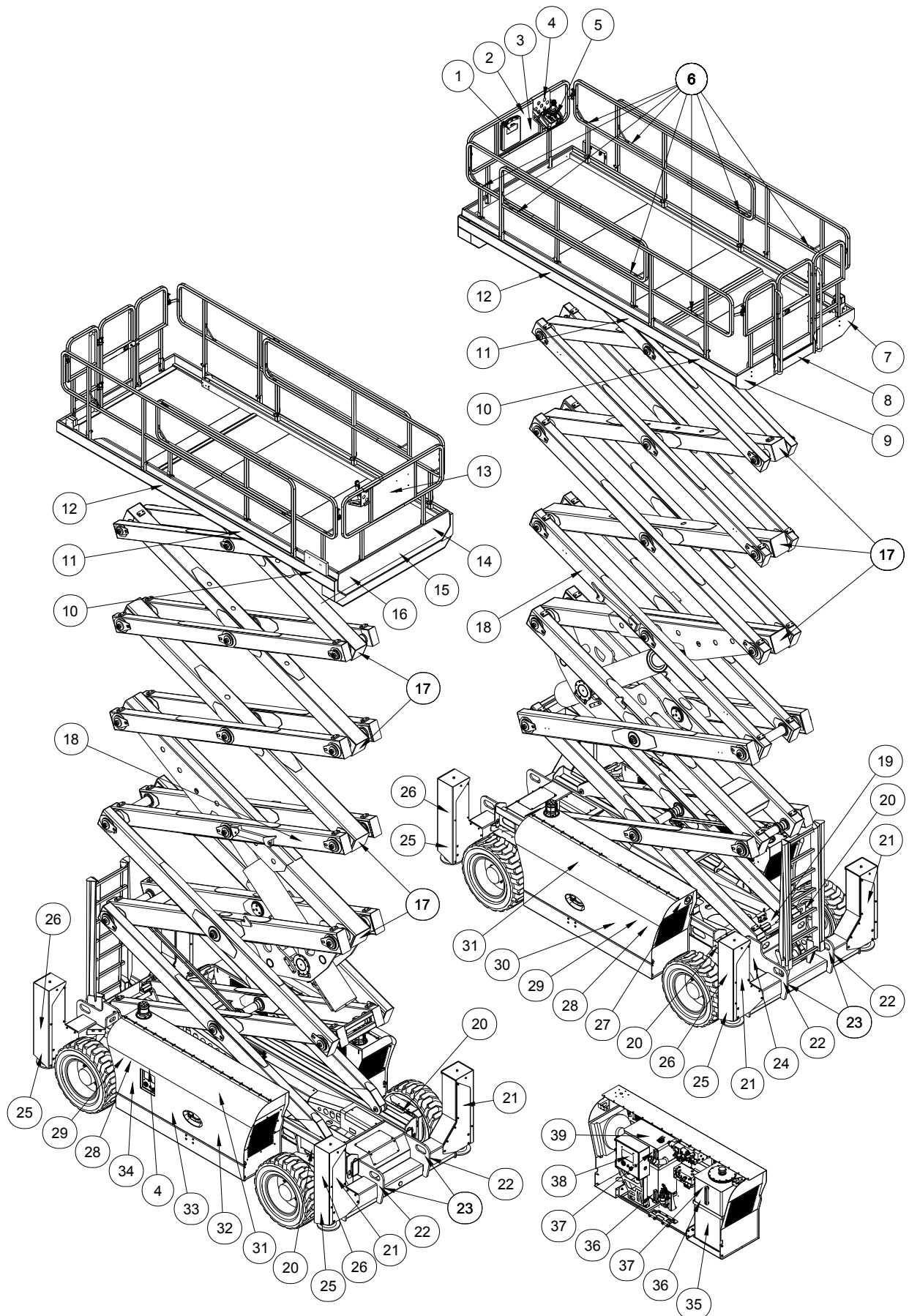
Below is a numerical list with quantities and descriptions.

No.	Part No.	Description	Qty.	Remark
1	9334011	Notice – Operator's Manual Storage	1	
2	9414101	Danger – Safety Rules	1	
3	9414119	Danger – Tip-over Hazard	1	
4	9314013	Instructions – Refer the operator to the instructions for use	2	
5	9114013	Label – Platform Console Panel	1	
6	9414123	Label – Lanyard Anchorage	6	
7	9914025	Cosmetic – Warning	1	
8	9414063	Label – Capacity 750kg	1	
9	9914023	Cosmetic – Warning	1	
10	9514011	Cosmetic – Mark	2	
11	9414107	Caution – Max. Manual Force: 400N	2	
12	9614091	Cosmetic – JCPT2223RTA	2	
13	9514105	Cosmetic – Mark	1	
14	9914021	Cosmetic – Warning	1	
15	9514051	Cosmetic – Mark	1	
16	9914019	Cosmetic – Warning	1	
17	9413017	Warning – Crushing Hazard	7	
18	9413015	Danger – Safety Arm	2	
19	9411015	Danger – Tip-over hazard	1	
20	9311557	Instructions – Maximum wheel load: 4030kg	4	
21	9432013	Warning – Crushing Hazard	4	
22	9331013	Instructions – Tie Down Point	4	

Decals

No.	Part No.	Description	Qty.	Remark
23	9331011	Instructions – Lift Point	4	
24	9211011	Decal – Manufacturer's Plate	1	
25	9311143	Instructions – Outrigger load: 4030kg	4	
26	9411019	Warning – Crushing Hazard	4	
27	9311105	Notice – Main power switch operation	1	
28	9514301	Cosmetic – IPAF	2	
29	9514201	Cosmetic – CE	2	
30	9411011	Danger – Explosion/Burn Hazard	1	
31	9911023	Instructions – JCPT2223RTA 4×4 SELF-PROPELLED ROUGH TERRAIN SCISSOR LIFTS	2	
32	9411021	Warning – Injection Hazard	1	
33	9311109	Instructions – Emergency	1	
34	9411013	Warning – Inspected and operating properly	1	
35	9332013	Instructions – Hydraulic Oil	1	On the Hydraulic Oil Tank
36	9332017	Instructions – Lowest Hydraulic Oil Level	2	On the Hydraulic Oil Tank and Diesel Tank
37	9332015	Instructions – Highest Hydraulic Oil Level	2	
38	9111011	Label – Ground Console Panel	1	
	9111013	Label – Ground Console Panel	1	
39	9332011	Instructions – Diesel	1	On the Diesel Tank

Decals



Decals

Platform

② 9414101

③ 9414119

① 9334011

④ 9314013

⑤ 9114039

⑥ 9414123

⑧ 9414063

⑫ 9614091

⑦ 9914025

⑨ 9914023

⑩ 9514011

⑪ 9414107

⑬ 9514105

⑮ 9514051

⑯ 9914019

Scissor Arms

⑰ 9413017

⑱ 9413015

⑲ 9411015

⑳ 9311557

㉑ 9432013

㉒ 9331013

㉓ 9311143

㉔ 9331011

㉕ 9311105

㉖ 9411019

㉗ 9911023

㉘ 9514301

㉙ 9514201

㉚ 9411013

㉛ 9411011

㉜ 9311109

㉝ 9111037 and 9111039

㉞ 9332017

㉟ 9332015

㊱ 9332013

㊲ 9332011

Chassis

㉟ 9411015

㊱ 9331011

㊲ 9332011

㊳ 9332013

㊴ 9332015

㊵ 9332017

㊶ 9332019

㊷ 9332013

㊸ 9332015

㊹ 9332017

㊺ 9332019

HYDRAULIC DIESEL

JCPT2223RTA: 4x4 SELF-PROPELLED ROUGH-TERRAIN SCISSOR LIFTS

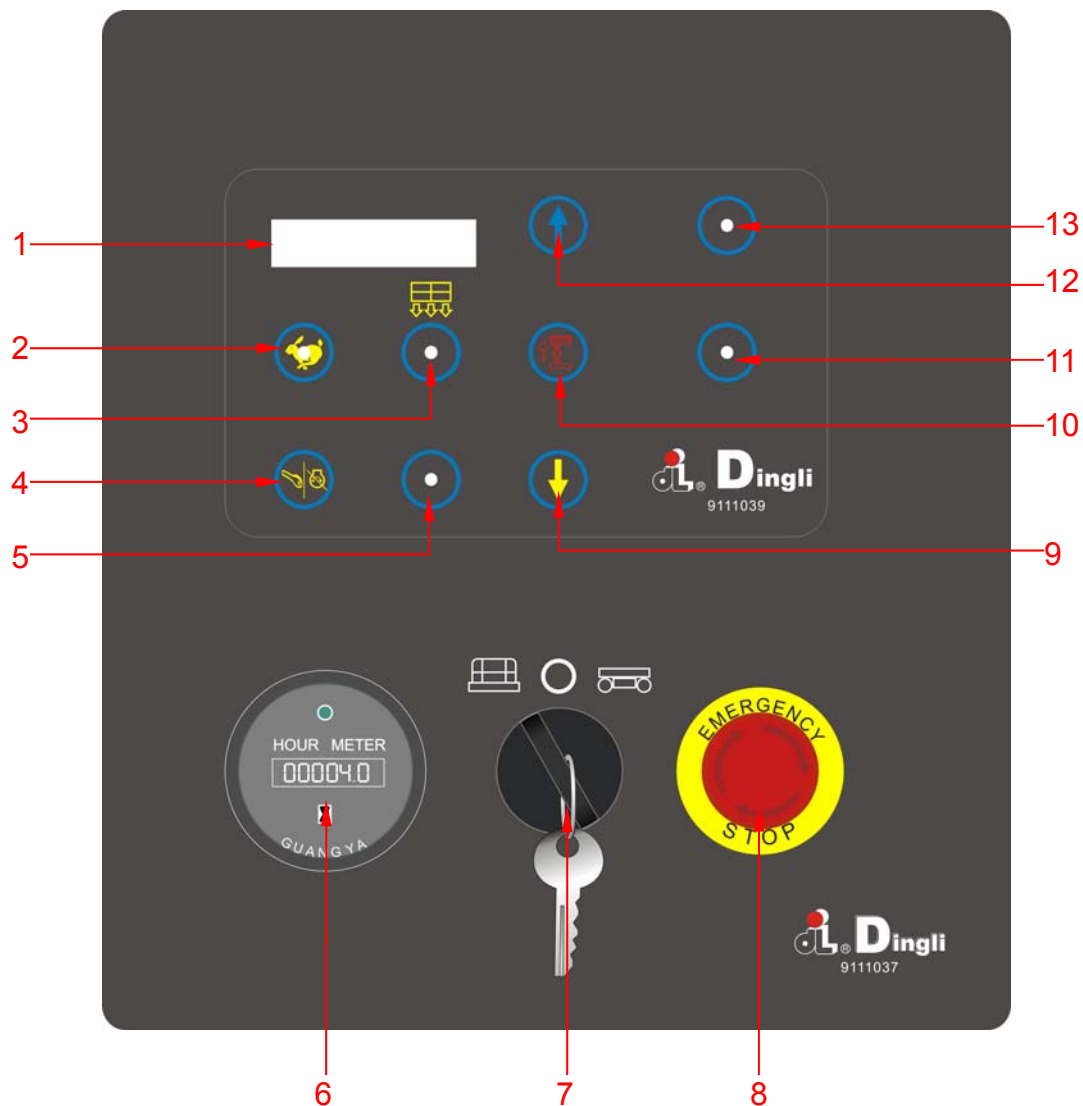
Specifications

Model JCPT2223RTA

Height, working maximum	22m	Airborne noise emissions	<80 dB
Height, platform maximum	20m	Maximum sound level at normal operating workstations (A-weighted)	
Height, drive maximum	12 m	Vibration value does not exceed 2.5m / s ²	
Height, stowed maximum Rails up	3.68m	Maximum slope rating , Stowed position	30%
Height, stowed maximum Rails folded	2.9m	Maximum side slope rating Stowed position	25%
Width	2.35m	Note: Slope rating is subject to ground conditions and adequate traction.	
Length, platform retracted	4.9m	Maximum working slope	X-2°, Y-3°
Platform dimensions Platform length x width	4.35m×1.85m	Drive speeds	
Platform extension length	2.0m	Stowed, maximum	6.6 km/h
Maximum load capacity	750kg	Platform raised, maximum	0.5 km/h
Maximum wind speed	12.5m/s	Floor loading information	
Wheelbase	3.13m	Tire load, maximum	4030kg
Turning radius (outside)	4.6m	Outrigger load, maximum	4030kg
Turning radius (inside)	2.1m	Tire contact pressure	740kPa
Ground clearance	30cm	Occupied floor pressure	11.8kPa
Weight	See Serial Label	Note: Floor loading information is approximate and does not incorporate different option configurations. It should be used only with adequate safety factors.	
Machine weights vary with option configurations		Continuous improvement of our products is a DINGLI policy. Product specifications are subject to change without notice or obligation.	
Controls	Proportional		
AC outlet in platform	Standard		
Maximum hydraulic pressure (functions)	240bar		
Tire size	355/55D625		

Control Panel

Ground Control Panel



- | | |
|--|--------------------------------|
| 1 LED readout screen | 8 Red Emergency Stop button |
| 2 Idle select button | 9 Platform down button |
| 3 Overload indicator light | 10 Lift function enable button |
| 4 Engine start/flameout button | 11 Standby |
| 5 Engine RPM display button | 12 Platform up button |
| 6 Hour meter | 13 Standby |
| 7 Key switch for platform / off / ground control selection | |

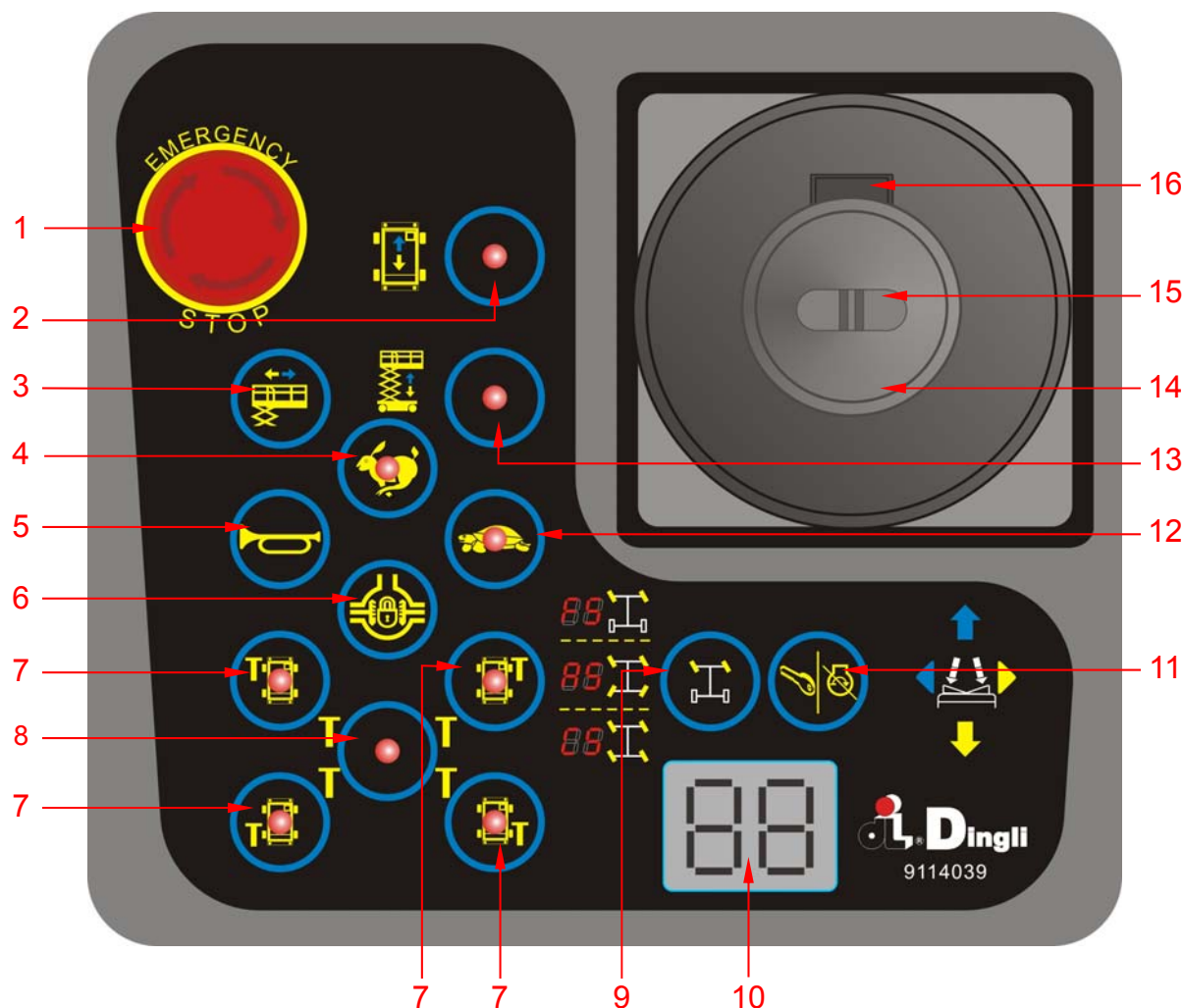
Control Panel**Ground Control Panel**

- | | |
|---|---|
| <p>1 LED
Diagnostic readout</p> <p>2 Idle select button
Press this button to select the engine idle setting. Light on indicates high idle is selected. Light off indicates low idle is selected.</p> <p>3 Overload indicator light
Light on indicates when overloaded.</p> <p>4 Engine start/flameout button
Press this button to start/flameout the engine.</p> <p>5 Engine RPM display button
Press this button to show the engine RPM.</p> <p>6 Hour meter
The hour meter displays the number of hours the machine has operated.</p> <p>7 Key switch for platform / off / ground Turn the key switch to the platform position and the platform controls will operate.

Turn the key switch to the off position and the machine will be off. Turn the key switch to the base position and the ground controls will operate.</p> | <p>8 Red Emergency Stop button
Push in the red Emergency Stop button to the off position to stop all functions. Turn the red Emergency Stop button clockwise to the on position to operate the machine.</p> <p>9 Platform down button
Press this button and the platform will lower</p> <p>10 Lift function enable button
Press this button to activate the lift function.</p> <p>11 Standby</p> <p>12 Platform up button</p> <p>13 Standby</p> |
|---|---|

Control Panel

Platform Control Panel



- | | |
|--|---|
| 1 Red Emergency Stop button | 9 Steer mode select button |
| 2 Drive function select button | 10 LED |
| 3 Platform retractable enable button | 11 Engine start / flameout button |
| 4 Engine high speed idle select button | 12 Engine lower speed Idle select button |
| 5 Horn button | 13 Lift function select button |
| 6 Differential lock enable button | 14 Proportional control handle |
| 7 Outrigger control button | 15 Thumb rocker switch for steer function |
| 8 Outrigger auto level button | 16 Function enable button |

Control Panel**Platform Control Panel****1 Red Emergency Stop button**

Push in the red Emergency Stop button to the off position to stop all functions. Pull out the red Emergency Stop button to the on position to operate the machine.

2 Drive function select button

Press this button to activate the drive function.

3 Platform retractable enable button

Press and hold this button to activate the platform retractable function.

4 Engine high speed idle select button

Press this button to select the engine idle setting. Light on indicates high idle is selected.

5 Horn button

Press this button and the horn will sound.
Release the button and the horn will stop.

6 Differential lock enable button

Press and hold this button to activate the differential lock function.

7 Outrigger control button

Press this button to activate the individual outrigger up/down function.

8 Outrigger auto level button

Press this button to activate the auto level function.

9 Steer mode select button

Press this button to select steer mode : FS mode (Front Steer mode), AS mode (All wheel Steer mode), CS mode (Crab Steer mode).

10 LED

Diagnostic readout and steer mode and battery charge indicator.

11 Engine start / flameout button

Press this button to start/ flameout the engine.

12 Engine lower speed Idle select button

Press this button to select the engine idle setting. Light on indicates high idle is selected.

13 Lift function select button

Press this button to activate the lift function.

14 Proportional control handle

Move the control handle control the drive function, Lift function, and platform retractable function outrigger retractable function

15 Thumb rocker switch for steer function

Press the thumb rocker switch in either direction to activate steer function.

16 Function enable switch

Lift function: Press and hold the function enable switch to enable the lift function on the platform control handle. Move the control handle in the direction indicated by the blue arrow and the platform will raise. Move the control handle in the direction indicated by the yellow arrow and the platform will lower. The descent alarm should sound while the platform is lowering.

Drive function: Press and hold the function enable switch to enable the drive function on the platform control handle. Move the control handle in the direction indicated by the blue arrow on the control panel and the machine will move in the direction that the blue arrow points. Move the control handle in the direction indicated by the yellow arrow on the control panel and the machine will move in the direction that the yellow arrow points.

Pre-operation Inspection



Do Not Operate Unless:

- ☒ You learn and practice the principles of safe machine operation contained in this operator's manual.

- 1 Avoid hazardous situations.
- 2 Always perform a pre-operation inspection.**

Know and understand the pre-operation inspection before going on to the next section.

- 3 Inspect the workplace.
- 4 Always perform function tests prior to use.
- 5 Only use the machine as it was intended.

Fundamentals

It is the responsibility of the operator to perform a pre-operation inspection and routine maintenance.

The pre-operation inspection is a visual inspection performed by the operator prior to each work shift. The inspection is designed to discover if anything is apparently wrong with a machine before the operator performs the function tests.

The pre-operation inspection also serves to determine if routine maintenance procedures are required. Only routine maintenance items specified in this manual may be performed by the operator.

Refer to the list on the next page and check each of the items.

If damage or any unauthorized variation from factory delivered condition is discovered, the machine must be tagged and removed from service.

Repairs to the machine may only be made by a qualified service technician, according to the manufacturer's specifications. After repairs are completed, the operator must perform a pre-operation inspection again before going on to the function tests.

Scheduled maintenance inspections shall be performed by qualified service technicians, according to the manufacturer's specifications and the requirements listed in this manual.

Pre-operation Inspection

Pre-operation Inspection

- ☐ Be sure that the operator's manual are complete, legible and in the storage container located in the platform.
- ☐ Be sure that all decals are legible and in place. See Decals section.
- ☐ Check for engine oil leaks and proper oil level. Add oil if needed. See Maintenance section.
- ☐ Check for hydraulic oil leaks and proper oil level. Add oil if needed. See Maintenance section.
- ☐ Check for engine coolant leaks and proper level of coolant. Add coolant if needed. See Maintenance section.
- ☐ Check for battery fluid leaks and proper fluid level. Add distilled water if needed. See Maintenance section.

Check the following components or areas for damage, improperly installed or missing parts and unauthorized modifications:

- ☐ Electrical components, wiring and electrical cables
- ☐ Hydraulic hoses, fittings, cylinders and manifolds
- ☐ Fuel and hydraulic tanks
- ☐ Drive motors
- ☐ Wear pads
- ☐ Tires and wheels
- ☐ Engine and related components
- ☐ Limit switches, alarms and horn
- ☐ Nuts, bolts and other fasteners
- ☐ Platform overload components
- ☐ Platform entry gate
- ☐ Beacon and alarms (if equipped)

- ☐ Safety arm
- ☐ Platform extension(s)
- ☐ Scissor pins and retaining fasteners
- ☐ Platform control joystick
- ☐ Oscillate Axle
- ☐ Differential lock
- ☐ Outrigger housings and footpads

Check entire machine for:

- ☐ Cracks in welds or structural components
- ☐ Dents or damage to machine
- ☐ Be sure that all structural and other critical components are present and all associated fasteners and pins are in place and properly tightened

Note: If the platform must be raised to inspect the machine, make sure the safety arm is in place. See Operating Instructions section.

Workplace Inspection



Do Not Operate Unless:

☒ You learn and practice the principles of safe machine operation contained in this operator's manual.

- 1 Avoid hazardous situations.
- 2 Always perform a pre-operation inspection.

3 Inspect the workplace.

Know and understand the workplace inspection before going on to the next section.

- 4 Always perform function tests prior to use.
- 5 Only use the machine as it was intended.

Fundamentals

The workplace inspection helps the operator determine if the workplace is suitable for safe machine operation. It should be performed by the operator prior to moving the machine to the workplace.

It is the operator's responsibility to read and remember the workplace hazards, then watch for and avoid them while moving, setting up and operating the machine.

Workplace Inspection

Be aware of and avoid the following hazardous situations:

- Drop-offs or holes
- Bumps, floor obstructions or debris
- Sloped surfaces
- Unstable or slippery surfaces
- Overhead obstructions and high voltage conductors
- Hazardous locations
- Inadequate surface support to withstand all load forces imposed by the machine
- Wind and weather conditions
- The presence of unauthorized personnel
- Other possible unsafe conditions

Function Tests



Do Not Operate Unless:

☒ You learn and practice the principles of safe machine operation contained in this operator's manual.

- 1 Avoid hazardous situations.
- 2 Always perform a pre-operation inspection.
- 3 Inspect the workplace.
- 4 **Always perform function tests prior to use.**

Know and understand the function tests before going on to the next section.

- 5 Only use the machine as it was intended.

Fundamentals

The function tests are designed to discover any malfunctions before the machine is put into service.

The operator must follow the step-by-step instructions to test all machine functions.

A malfunctioning machine must never be used. If malfunctions are discovered, the machine must be tagged and removed from service. Repairs to the machine may only be made by a qualified service technician, according to the manufacturer's specifications.

After repairs are completed, the operator must perform a pre-operation inspection and function tests again before putting the machine into service.

Function Tests

- 1 Select a test area that is firm, level and free of obstruction.

At the Ground Controls

- 2 Pull out the platform red Emergency Stop button to the on position.
 - 3 Turn the red Emergency Stop button clockwise to the on position.
 - 4 Turn the key switch to ground control.
 - 5 Observe the diagnostic LED readout on the ground controls.
- ⊙ Result: The LED readout will come on and display SYSTEM READY.
- 6 Start the engine. See Operating Instructions section.

Test Emergency Stop

- 7 Push in the ground red Emergency Stop button to the off position.
- ⊙ Result: The engine should turn off and no functions should operate.
- 8 Turn the red Emergency Stop button clockwise to the on position and restart the engine.

Test Up/Down Functions and Function Enable

A buzzer with different sound frequency is controlled in central system. The descent alarm sounds at 60 beeps per minute. The alarm that goes off when the machine is not level sounds at 150 beeps per minute. An optional automotive-style horn is also available.

- 9 Do not press the lift function enable button. Press and hold the platform up/down button.
- ⊙ Result: No function should operate.
- 10 Press and hold the lift function enable button. Press and hold the platform up button.

- ⊙ Result: The platform should rise.
- 11 Press and hold the lift function enable button. Press and hold the platform down button.
- ⊙ Result: The platform should lower then stop at the height is 3.5m. The descent alarm should sound while the platform is lowering.
- 12 Press and hold the lift function enable button. Press and hold the platform down button.
- ⊙ Result: The platform should lower to end. The descent alarm should sound while the platform is lowering.

Test the Auxiliary Lowering

- 13 Activate the up function and raise the platform approximately 60 cm.
 - 14 Press the engine start/ flameout button to engine off.
 - 15 Press and hold the lift function enable button. Press and hold the platform down button.
- ⊙ Result: The platform should lower.
- 16 Turn the key switch to platform control and restart the engine.

At the Platform Controls

Test Emergency Stop

- 17 Push in the platform red Emergency Stop button to the off position.
- ⊙ Result: No functions should operate.
- 18 Pull the red Emergency Stop button out to the on position.
- ⊙ Result: The LED readout will come on and display SYSTEM READY

Function Tests

Test the Horn

19 Push the horn button.

- ⊙ Result: The horn should sound.

Test Up/Down Functions and Function Enable

20 Start the engine.

21 Activate the up/down rocker switch in the direction indicated by the blue arrow.

- ⊙ Result: The platform should not rise.

22 Press the lift function select button. The indicator light should turn on.

23 Press and hold the function enable button. Activate the proportional control handle in the direction indicated by the blue arrow.

- ⊙ Result: The platform should rise.

24 Activate the proportional control handle in the direction indicated by the yellow arrow.

- ⊙ Result: The platform should lower. The descent alarm should sound while the platform is lowering.

Test the Steering

Note: When performing the steer and drive function test, stand in the platform facing the steer end of the machine.

25 Press the drive function select button. The indicator light should turn on.

26 Push the steer mode select button for steer FS mode (Front Steer mode).

27 Press and hold the function enable switch on the proportional control handle. Depress the thumb rocker switch on top of the proportional control handle in the direction identified by the blue triangle on the control panel.

- ⊙ Result: The front wheels should turn in the direction that the blue triangle points on the control panel.

28 Press and hold the function enable switch on the proportional control handle. Depress the thumb rocker switch in the direction identified by the yellow triangle on the control panel.

- ⊙ Result: The front wheels should turn in the direction that the yellow triangle points on the control panel.

29 Push the steer mode select button for steer AS mode (All wheel Steer mode).

30 Press and hold the function enable switch on the proportional control handle. Depress the thumb rocker switch on top of the proportional control handle in the direction identified by the blue triangle on the control panel.

- ⊙ Result: The front wheels should turn in the direction that the blue triangle points on the control panel and the rear wheels should turn in the direction that the yellow triangle points on the control panel

31 Press and hold the function enable switch on the proportional control handle. Depress the thumb rocker switch in the direction identified by the yellow triangle on the control panel.

- ⊙ Result: The front wheels should turn in the direction that the yellow triangle points on the control panel and the rear wheels should turn in the direction that the blue triangle points on the control panel

32 Push the steer mode select button for steer CS mode (Crab Steer mode).

33 Press and hold the function enable switch on the proportional control handle. Depress the thumb rocker switch on top of the proportional control handle in the direction identified by the blue triangle on the control panel.

- ⊙ Result: The front wheels should turn in the direction that the blue triangle points on the

Function Tests

control panel and the rear wheels should turn in the direction that the blue triangle points on the control panel

- 34 Press and hold the function enable switch on the proportional control handle. Depress the thumb rocker switch in the direction identified by the yellow triangle on the control panel.

- ⊙ Result: The front wheels should turn in the direction that the yellow triangle points on the control panel and the rear wheels should turn in the direction that the yellow triangle points on the control panel

Test Drive and Braking

- 35 Press and hold the function enable switch on the proportional control handle.

- 36 Slowly move the proportional control handle in the direction indicated by the blue arrow on the control panel until the machine begins to move, then return the proportional control handle to the center position.

- ⊙ Result: The machine should move in the direction that the blue arrow points on the control panel, then come to an abrupt stop.

- 37 Press and hold the function enable switch on the proportional control handle.

- 38 Slowly move the proportional control handle in the direction indicated by the yellow arrow on the control panel until the machine begins to move, then return the proportional handle to the center position.

- ⊙ Result: The machine should move in the direction that the yellow arrow points on the control panel, then come to an abrupt stop.

Note: The brakes must be able to hold the machine on any slope it is able to climb.

Test Limited Drive Speed

- 39 Press the lift function select button. Raise

the platform approximately 3.5 m from the ground.

- 40 Press the drive function select button.

- 41 Press and hold the function enable switch on the proportional control handle slowly move the proportional control handle to the full drive position.

- ⊙ Result: The maximum achievable drive speed with the platform raised should not exceed 12.5cm/s.

- ⊗ Result: If the drive speed with the platform raised exceeds 12.5cm/s, immediately tag and remove the machine from service.

Test the Tilt Sensor Operation

Note: Perform this test from the ground with the platform controller. Do not stand in the platform.

- 42 Fully lower the platform.

- 43 Drive both wheels on one side onto an 18cm block.

- 44 Raise the platform at least 3.5 m.

- ⊙ Result: The platform should stop and the tilt alarm will sound. The indicator light on the lift function select button will be red.

- 45 Press the drive function select button.

- 46 Move the proportional control handle in the direction indicated by the blue arrow, then move the proportional control handle in the direction indicated by the yellow arrow.

- ⊙ Result: The drive function should not work in either direction.

- 47 Press the lift function enable button.

- 48 Lower the platform and drive the machine off the block.

Test the Oscillate System

Note: Perform this test from the ground with the platform controller. Do not stand in the

Function Tests

platform.

49 Fully lower the platform.

50 Drive the Left front wheel onto an 18cm block.

51 Raise the platform at least 3.5 m.

52 Press the drive function select button

53 Activate the proportional control handle in the direction indicated by the yellow arrow

☉ Result: The left front or right rear wheel remains elevated in position off ground

54 Press the lift function enable button.

55 Lower the platform to stowed position, activation drives forward and backward moving machine.

☉ Result: Lockout cylinders should release and allow wheel to rest on ground

56 Drive the right front wheel onto an 18cm block.

57 Raise the platform at least 3.5 m.

58 Press the drive function select button

59 Activate the proportional control handle in the direction indicated by the yellow arrow

☉ Result: The right front or left rear wheel remains elevated in position off ground

60 Press the lift function enable button.

61 Lower the platform to stowed position, activation drives forward and backward moving machine.

☉ Result: Lockout cylinders should release and allow wheel to rest on ground

Test the Up Limit Switch and the Outriggers

62 Push and hold the lift function enable button. Raise the platform.

☉ Result: The platform should rise to 12 m and then stop. The platform should not rise

above 12 m unless the outriggers are lowered.

63 Press the drive function select button. Drive the machine forward.

☉ Result: The drive function should operate.

64 Press the lift function select button.

65 Lower the platform. If the platform is higher than 3.5 m from the ground, the outriggers will not lower.

66 Lower the platform to the end.

67 Push and hold the auto level button.

68 Press and hold the function enable switch. Activate the proportional control handle in the direction indicated by the yellow arrow. The outriggers will extend and level the machine. A beep will sound when the machine is level.

69 Raise the platform.

☉ Result: The platform should rise to full height.

70 Lower the platform.

Test Auxiliary Lowering

71 Push and hold the function enable button and raise the platform approximately 60 cm.

72 Press the engine start/ flameout button to engine off.

73 Push and hold the function enable button. Activate the control handle in the direction indicated by the yellow arrow.

☉ Result: The platform should lower.

Test Platform Telescopic Functions

74 Push and hold the Platform retractable enable button. Press and hold the function enable switch. Activate the proportional control handle in the direction indicated by the blue arrow

Function Tests

- ⊙ Result: The platform should spread.
- 75 Push and hold the Platform retractable enable button. Press and hold the function enable switch. Activate the proportional control handle in the direction indicated by the yellow arrow.
- ⊙ Result: The platform should retract

Operating Instructions



Do Not Operate Unless:

☒ You learn and practice the principles of safe machine operation contained in this operator's manual.

- 1 Avoid hazardous situations.
- 2 Always perform a pre-operation inspection.
- 3 Inspect the workplace.
- 4 Always perform function tests prior to use.
- 5 **Only use the machine as it was intended.**

Fundamentals

This machine is a self-propelled hydraulic lift equipped with a work platform on the scissor mechanism. Vibrations emitted by these machines are not hazardous to an operator in the work platform. The machine can be used to position personnel with their tools and supplies at position above ground level and can be used to reach work areas located above and over machinery or equipment.

A full and detailed implementation of EN ISO 13849-1/2 is correctly applied on our MEWP design. SISTEMA, a software tool for PL Calculation Tool, is also used to perform some relatively straightforward calculations on subsystem to determine the overall PL of the system. Reliability data, diagnostic coverage [DC], the system architecture [Category], common cause failure and, where relevant, requirements for software are used to assess the PL to comply with PLr of SRP/CS in Clause 5.11 of EN 280.

The Operating Instructions section provides instructions for each aspect of machine operation.

It is the operator's responsibility to follow all the safety rules and instructions in the operator's manual.

Using the machine for anything other than lifting personnel, along with their tools and materials, to an aerial work site is unsafe and dangerous.

Only trained and authorized personnel should be permitted to operate a machine. If more than one operator is expected to use a machine at different times in the same work shift, they must all be qualified operators and are all expected to follow all safety rules and instructions in the operator's manual. That means every new operator should perform a pre-operation inspection, function tests, and a workplace inspection before using the machine.

Operating Instructions

Emergency Stop

Push in the red Emergency Stop button to the off position at the ground controls or the platform controls to stop all machine functions and turn the engine off.

Repair any function that operates when either red Emergency Stop button is pushed in.

Starting the Engine

- 1 At the ground controls, turn the key switch to the desired position.
- 2 Be sure both ground and platform control red Emergency Stop buttons are pulled out to the on position.
- 3—Press the engine start button.

When the temperature is too low, the engine will be preheated automatically.

If the engine fails to start after 15 seconds of cranking, determine the cause and repair any malfunction. Wait 60 seconds before trying to start again.

In cold conditions, -6°C and below, warm the engine for 5 minutes before operating to prevent hydraulic system damage.

In extreme cold conditions, -18°C and below, machines should be equipped with optional cold start kits. Attempting to start the engine when temperatures are below -18°C may require the use of a booster battery.

Operation from Ground

- 1 Turn the key switch to ground control.
- 2 Pull out the platform red Emergency Stop button to the on position.
- 3 Turn the red Emergency Stop button clockwise to the on position.
- 4 Start the engine.

To Position Platform

- 1 Press the lift function enable button.
- 2 Press the platform up/down button to activate the up function or the down function.

Drive and steer functions are not available from the ground controls.

Engine Idle Select

Select the engine idle (rpm) by press.

Operation from Platform

- 1 Turn the key switch to platform control.
- 2 Pull out the ground and platform red Emergency Stop buttons to the on position.
- 3 Start the engine.

To Position Platform

- 1 Press the lift function select button.
- 2 Press and hold the function enable switch on the control handle.
- 3 Activate the proportional control handle in the desired direction.

To Steer

- 1 Press the drive function select button.
- 2 Press and hold the function enable switch on the control handle.
- 3 Push the steer mode select button for steer mode (FS. AS CS)
- 4 Turn the steer wheels with the thumb rocker switch located on the top of the control handle.

To Drive

- 1 Press the drive function select button.
- 2 Press and hold the function enable switch on the control handle.

Operating Instructions

- 3 Increase speed: Slowly move the control handle off center.

Decrease speed: Slowly move the control handle toward center.

Stop: Return the control handle to center or release the function enable switch.

Use the direction arrows on the platform controls to identify the direction the machine will travel.

Machine travel speed is restricted when the platform is raised.

Drive Select Switch

The drive controls can operate in two different drive speed modes. When the engine lower speed idle select button light is on, slow drive speed mode is active. When the engine high speed idle select button light is on, fast drive speed mode is active.

Driving on a slope

Determine the slope and side slope ratings for the machine and determine the slope grade.

Maximum slope rating, stowed position 30%,
Maximum side slope rating, stowed position 25%

Note: Slope rating is subject to ground conditions and adequate traction.

Press the drive speed select switch to the fast drive speed mode.

To determine the slope grade

Measure the slope with a digital inclinometer or use the following procedure.

You will need:

Carpenter's level

Straight piece of wood, at least 1 m long
tape measure

Lay the piece of wood on the slope

At the downhill end, lay the level on the top

edge of the piece of wood and lift the end until the piece of wood is level.

While holding the piece of wood level, measure the distance from the bottom of the piece of wood to the ground.

Divide the tape measure distance (rise) by the length of the piece of wood (run) and multiply by 100.

Example:

Run = 3.6 m

Rise = 0.3 m



$$0.3 \text{ m} \div 3.6 \text{ m} = 0.083 \times 100 = 8.3\%$$

If the slope exceeds the maximum slope or side slope rating, the machine must be winched or transported up or down the slope. See Transport and Lifting section.

To Extend and Retract Platform

- 1 Push and hold the platform spread button.
- 2 Push and hold the platform retracting button.

Auxiliary Lowering

At the Ground Controls

Press and hold the lift function enable button.
Press and hold the platform down button.

At the Platform Controls

Press the lift function select button.

Push and hold the function enable button.
Activate the control handle in the direction indicated by the yellow arrow.

Operation from Ground with

Operating Instructions

Controller

Maintain safe distances between operator, machine and fixed objects.

Be aware of the direction the machine will travel when using the controller.

Outrigger Operation

- 1 Position the machine below the desired work area.

Note: The engine must be running for the outriggers to operate.

- 2 Push and hold the auto level button.
- 3 Press and hold the function enable switch. Activate the proportional control handle in the direction indicated by the yellow arrow. The outriggers will extend and level the machine. A beep will sound when the machine is level.

The indicator light on the lift function enable button will turn on when one but not all outriggers are down. All drive and lift functions are disabled.

The indicator lights on the lift function enable button and on the individual outrigger buttons will turn off when all the outriggers are in firm contact with the ground.

The drive function is disabled while the outriggers are down.

To control individual outrigger

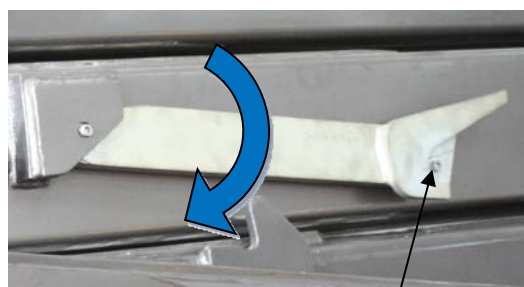
- 1 Push and hold one or more outrigger buttons.
- 2 Press and hold the function enable switch. Activate the proportional control handle in the direction indicated by the yellow arrow. The outriggers will extend and level the machine.

How to use the Safety Arm

The safety arm on the left and on the right side of the scissor system needs to be used for maintenance work. This safety arm relief the lifting cylinder and they hold the working platform safe.

To put the safety arm into the retainer the working platform has to be lifted. Afterwards the screws can be released so that the safety arm can be alligned downward.

When lowering the lifting system the safety arm will be engage into the retainers among. The lowering procedure will be interrupted automatically if the safety arms are on block.



Safety screw



Arm

Retainer

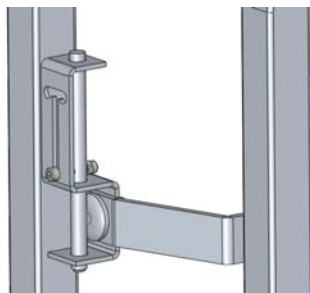
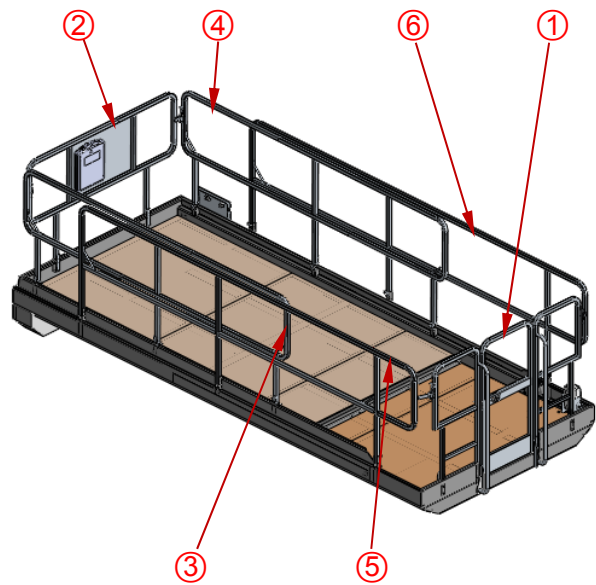
Operating Instructions

⚠ DANGER Don't engage the safety arm unless unload the platform.

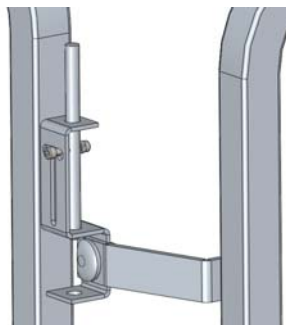
⚠ WARNING Using this safety arm is necessary during operations near the scissor system if the platform is lifted!

How to Fold Down the Guardrails

The platform railing system consists of three fold down rail section for the extension deck and three sections for the main deck. All sections are held in place by four latches.

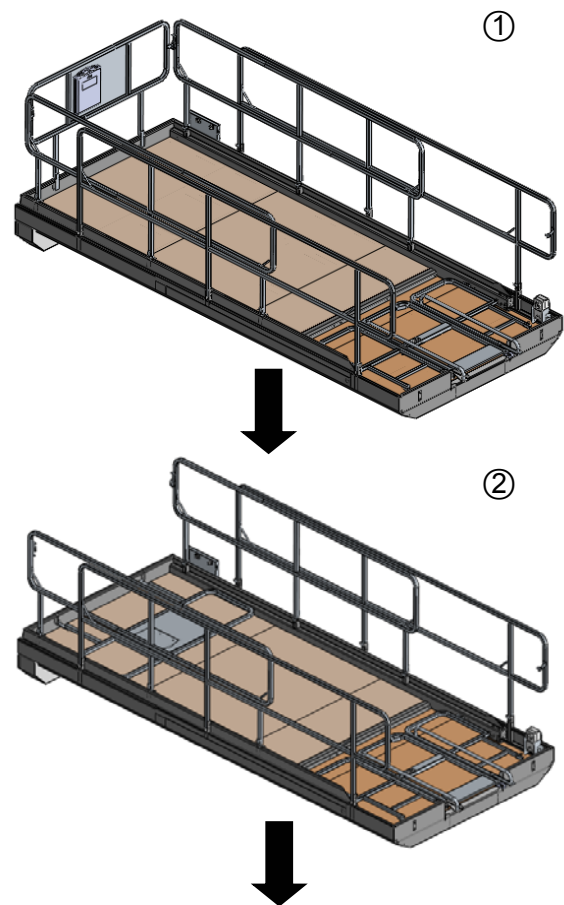


Closed latch

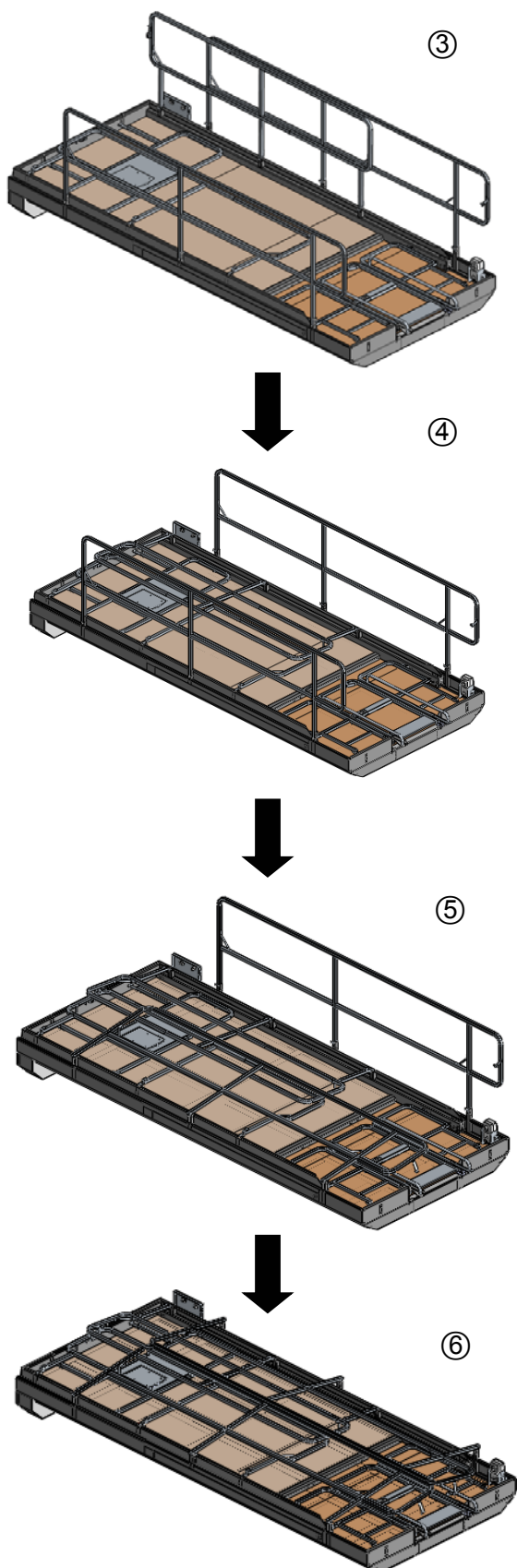


Open latch

- 1 Fully lower the platform and retract the platform extension.
- 2 Remove the platform controls.
- 3 Opening the latches in the corners the rails have to be folded in correct order of the numbering.



Operating Instructions



How to Raise the Guardrails

Follow the fold down instructions but in reverse order.

Emergency operating with hand pump

Emergency Lifting

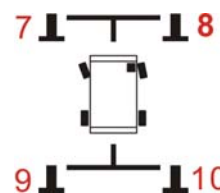
- 1 Unplug the lever and put it into the hand pump (1).
- 2 Press and hold the button (3) .
- 3 Operate the hand pump with the lever, the platform should rise.

Emergency Lowering

- 1 Unplug the lever and put it into the hand pump (1).
- 2 Press and hold the button (2) .
- 3 Operate the hand pump with the lever, the platform should rise.

Retracting outriggers

- 1 Unplug the lever and put it into the hand pump (1).
- 2 Turn the knob (4) in the direction of the arrow.
- 3 Choose the outrigger which needs to retract, turn the corresponding knob in the direction of the arrow.
- 4 Operate the hand pump with the lever, the outrigger emergency retract



Retracting Platform

- 1 Unplug the lever and put it into the hand pump (1).
- 2 Turn the knob (6) in the direction of the arrow.

Operating Instructions

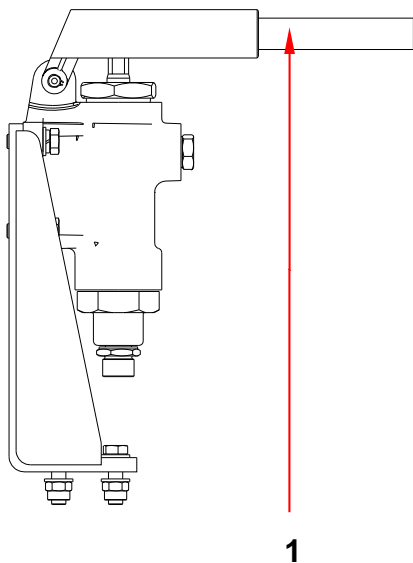
- 3 Operate the hand pump with the lever, the platform should rise.

⚠ WARNING Do not emergency lift/lower the platform and retract outriggers simultaneously; Reset the knob after all operations completed.

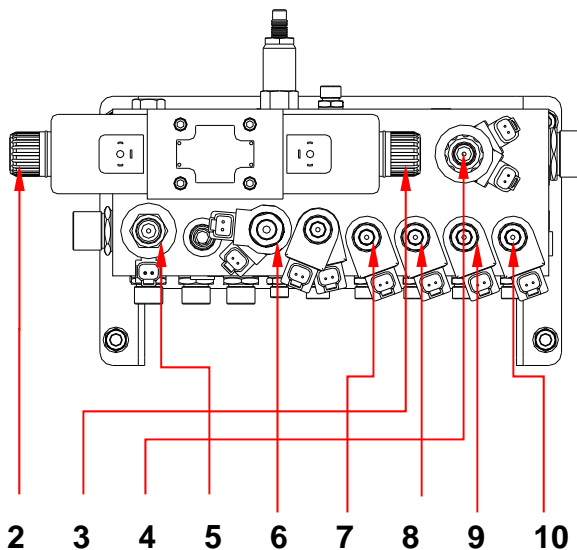
⚠ WARNING Emergency actuation of outriggers only in normal position danger of tipping!

After Each Use

- 1 Select a safe parking location - firm level surface, clear of obstructions and traffic.
- 2 Lower the platform.
- 3 Turn the key switch to the off position and remove the key to secure from unauthorized use.
- 4 Chock the wheels.



1



Transport and Lifting Instructions



Observe and Obey:

- ☒ Common sense and planning must be applied to control the movement of the machine when lifting it with a crane or forklift.
- ☒ The transport vehicle must be parked on a level surface.
- ☒ The transport vehicle must be secured to prevent rolling while the machine is being loaded.
- ☒ Be sure the vehicle capacity, loading surfaces and chains or straps are sufficient to withstand the machine weight. See the serial label for the machine weight.
- ☒ The machine must be on a level surface or secured before releasing the brakes.
- ☒ Do not drive the machine on a slope that exceeds the slope or side slope rating. See Driving on a Slope in the Operating Instructions section.
- ☒ If the slope of the transport vehicle bed exceeds the maximum slope rating, the machine must be loaded and unloaded using a winch as described.

Free-wheel Configuration for Winching

Chock the wheels to prevent the machine from rolling.



Loosen nuts of screws provided for the mechanical and manual release of the braking units, and then move the nuts backwards by approximately 8 mm.



Tighten screws so as to fasten them onto the pressure plate.

Using a wrench, tighten the screws in an alternate sequence by 1/4 turn at a time so as to compress the Belleville washers and disengage the braking disks

⚠ DANGER Before maintaining brakes, when the axle is installed on the vehicle, follow all safety instructions in the Original Equipment Manufacturer (OEM) manual that came with the vehicle.

⚠ CAUTION Tighten maximum by one turn.

Transport and Lifting Instructions

Securing to Truck or Trailer for Transit

Always chock the machine wheels in preparation for transport.

Retract and secure the extension deck(s).

Use the tie-down points on the chassis for anchoring down to the transport surface.

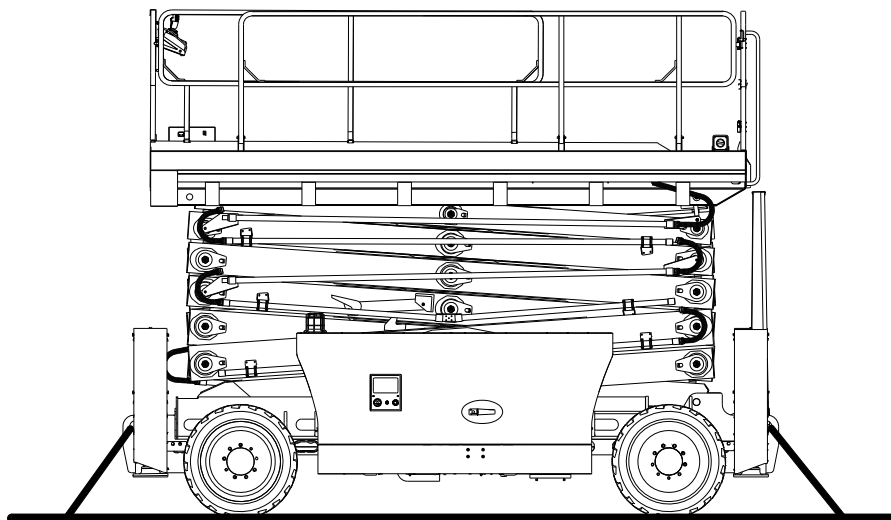
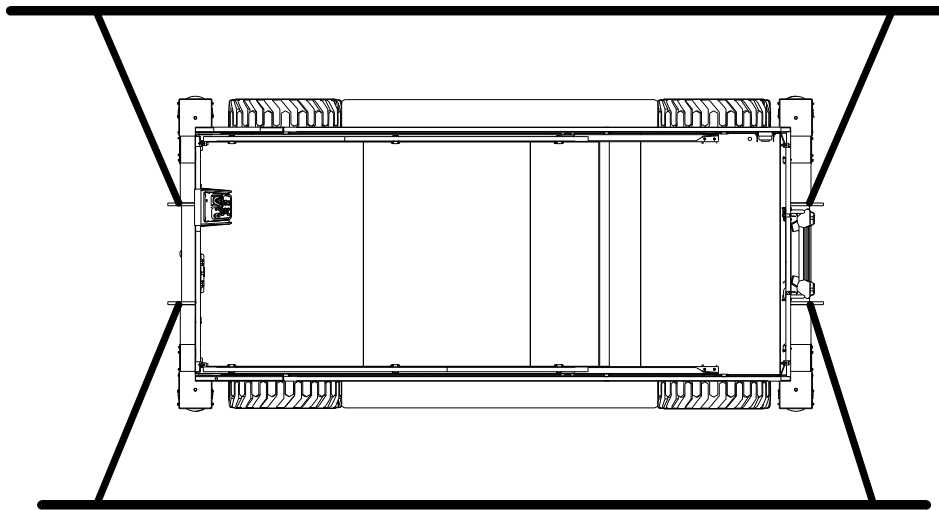
Use a minimum of four chains or straps.

Use chains or straps of ample load capacity.

Turn the key switch to the off position and remove the key before transporting.

Inspect the entire machine for loose or unsecured items.

If the railings have been folded down, secure them with straps before transporting.



Transport and Lifting Instructions



Observe and Obey:

- ☒ Only qualified riggers should rig and lift the machine.
- ☒ Be sure the crane capacity, loading surfaces and straps or lines are sufficient to withstand the machine weight. See the serial plate for the machine weight.

Determine the center of gravity of your machine using the table and the picture on this page.

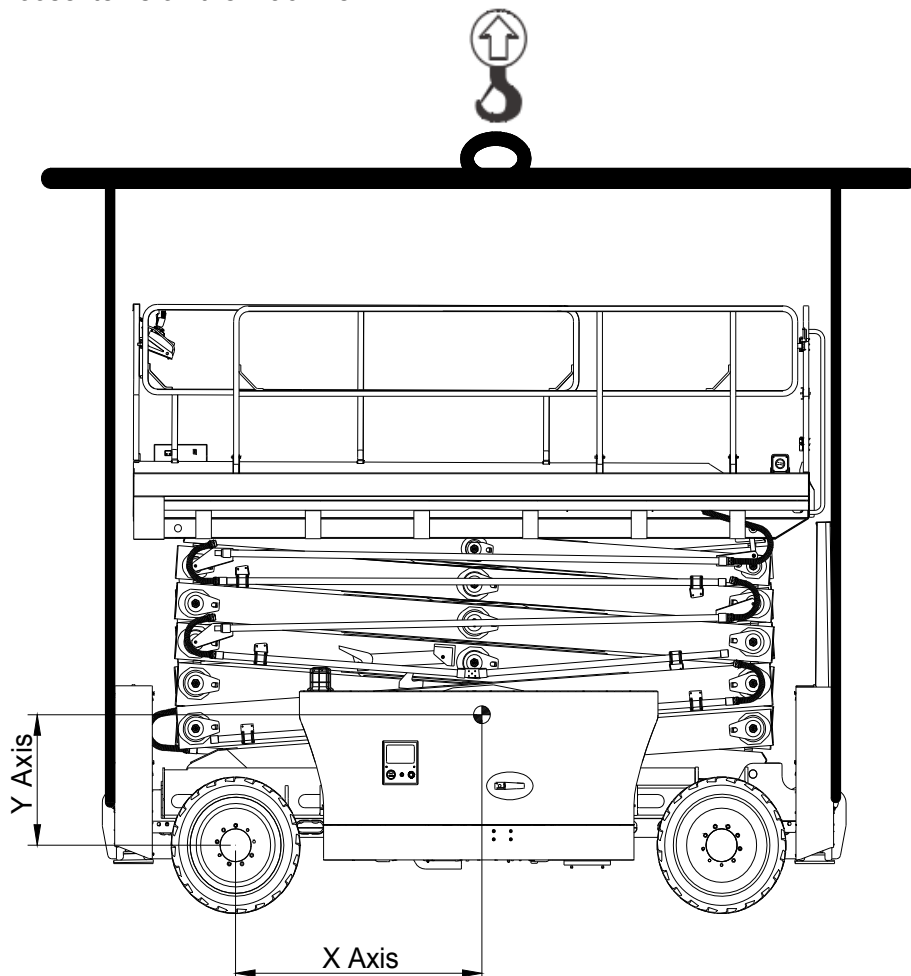
Attach the rigging only to the designated lifting points on the machine. There are two lifting points on each end of the machine.

Adjust the rigging to prevent damage to the machine and to keep the machine level.

Lifting Instructions

Fully lower the platform. Be sure the extension decks, controls and covers are secure. Remove all loose items on the machine.

Center of gravity	X Axis	Y Axis
JCPT2223RTA	1.7m	1.3m



Maintenance



Observe and Obey:

- ✓ Only routine maintenance items specified in this manual shall be performed by the operator.
- ✓ Scheduled maintenance inspections shall be completed by qualified service technicians, according to the manufacturer's specifications and the requirements specified in this manual.

Maintenance Symbols Legend

NOTICE

The following symbols have been used in this manual to help communicate the intent of the instructions. When one or more of the symbols appear at the beginning of a maintenance procedure, it conveys the meaning below.



Indicates that tools will be required to perform this procedure.



Indicates that new parts will be required to perform this procedure.



Indicates that a cold engine is required before performing this procedure.



Indicates that a warm engine will be required to perform this procedure.



Indicates that dealer service will be required to perform this procedure.

Pre-delivery Preparation Report

The pre-delivery preparation report contains checklists for each type of scheduled inspection.

Make copies of the Pre-delivery Preparation report to use for each inspection. Store completed forms as required.

Maintenance Schedule

There are five types of maintenance inspections that must be performed according to a schedule—daily, quarterly, semi-annually, annually, and two year. The Scheduled Maintenance Procedures Section and the Maintenance Inspection Report have been divided into five subsections—A, B, C, D, and E. Use the following chart to determine which group(s) of procedures are required to perform a scheduled inspection.

Inspection	Checklist
Daily or every 8 hours	A
Quarterly or every 250 hours	A+B
Semi-annually or every 500 hours	A+B +C
Annually or every 1000 hours	A+B +C +D
Two year or every 2000 hours	A+B+C+D+E

Maintenance Inspection Report

The maintenance inspection report contains checklists for each type of scheduled inspection.

Make copies of the Maintenance Inspection Report to use for each inspection. Maintain completed forms for a minimum of 4 years or in compliance with your employer, jobsite and governmental regulations and requirements.

Maintenance

Pre-delivery Preparation Report

Fundamentals

It is the responsibility of the dealer to perform the Pre-delivery Preparation.

The Pre-delivery Preparation is performed prior to each delivery. The inspection is designed to discover if anything is apparently wrong with a machine before it is put into service.

A damaged or modified machine must never be used. If damage or any variation from factory delivered condition is discovered, the machine must be tagged and removed from service.

Repairs to the machine may only be made by a qualified service technician, according to the manufacturer's specifications.

Scheduled maintenance inspections shall be performed by qualified service technicians, according to the manufacturer's specifications and the requirements listed in this manual.

Instructions

Use the operator's manual on your machine.

The Pre-delivery Preparation consists of completing the Pre-operation Inspection, the Maintenance items and the Function Tests.

Use this form to record the results. Place a check in the appropriate box after each part is completed. Follow the instructions in the operator's manual.

If any inspection receives an N, remove the machine from service, repair and re-inspect it. After repair, place a check in the R box.

Legend

Y = yes, completed

N = no, unable to complete

R = repaired

Comments

Pre-Delivery Preparation	Y	N	R
Pre-operation inspection completed			
Maintenance items completed			
Function tests completed			

Model

Serial number

Date

Machine owner

Inspected by (print)

Inspector signature

Inspector title

Inspector company

Maintenance

Maintenance Inspection Report

Model
Serial number
Date
Hour meter
Machine owner
Inspected by (print)
Inspector signature
Inspector title
Inspector company

Instructions

- Make copies of this report to use for each inspection.
- Select the appropriate checklist(s) for the type of inspection to be performed.

<input type="checkbox"/> Daily or 8 hours Inspection:	A
<input type="checkbox"/> Quarterly or 250 hours Inspection:	A+ B
<input type="checkbox"/> Semi-annually or 500 hours Inspection:	A+B+C
<input type="checkbox"/> Annually or 1000 hours Inspection:	A+B+C+D
<input type="checkbox"/> Two year or 2000 hours Inspection:	A+B+C+D+E

- Place a check in the appropriate box after each inspection procedure is completed.
- Use the step-by-step procedures in this section to learn how to perform these inspections.
- If any inspection receives an "N", tag and remove the machine from service, repair and re-inspect it. After repair, place a check in the "R" box.

Legend

- Y = yes, acceptable
N = no, remove from service
R = repaired

Checklist A	Y	N	R
A-1 Manuals and decals			
A-2 Pre-operation inspect			
A-3 Check the Batteries			
A-4 Check the Engine Oil Level			
A-5 Check the Hydraulic Oil Level			
A-6 Check the Engine Coolant Level			
A-7 Function tests			
A-8 Engine maintenance			

A-9 Drive Axle Maintenance			
Perform after 40 hours:			
A-10 30 day service			
Perform after 50 hours:			
A-11 Engine maintenance			
Perform every 100 hours:			
A-12 Drive Axle Maintenance			
Checklist B	Y	N	R
B-1 Battery			
B-2 Electrical wiring			
B-3 Exhaust system			
B-4 Tires and wheels			
B-5 Drive hub oil level			
B-6 Key switch			
B-7 Emergency Stop			
B-8 Horn			
B-9 Drive brakes			
B-10 Drive speed - stowed			
B-11 Drive speed - raised			
B-12 Hydraulic oil analysis			
B-13 Engine maintenance			
B-14 Drive Axle Maintenance			
Checklist C	Y	N	R
C-1 Platform overload			
C-2 Engine maintenance			
C-3 Drive Axle Maintenance			
Checklist D			
D-1 Scissor arm wear pads			
D-2 Free-wheel configuration			
D-3 Replace the Drive Axle Oil			
D-4 Engine maintenance			
D-5 Drive Axle Maintenance			
Checklist E	Y	N	R
E-1 Test or replace hydraulic oil			
Perform every 2000 hours:			
E-2 Engine maintenance			
Perform every 3000 hours:			
E-3 Engine maintenance			
Perform every 4000 hours:			
E-4 Engine maintenance			
Perform every 6000 hours:			
E-4 Engine maintenance			
Perform every 12,000 hours:			
E-6 Engine maintenance			

Maintenance

Checklist A Procedures

A-1

Inspect the Manuals and Decals

Maintaining the operator's manual in good condition is essential to safe machine operation. Manuals are included with each machine and should be stored in the container provided in the platform. An illegible or missing manual will not provide safety and operational information necessary for a safe operating condition.

In addition, maintaining all of the safety and instructional decals in good condition is mandatory for safe machine operation. Decals alert operators and personnel to the many possible hazards associated with using this machine. They also provide users with operation and maintenance information. An illegible decal will fail to alert personnel of a procedure or hazard and could result in unsafe operating conditions.

- 1 Check to make sure that the operator's manual is present and complete in the storage container on the platform.
- 2 Examine the pages of manual to be sure that they are legible and in good condition.

☉ Result: The operator's manual is appropriate for the machine and the manual are legible and in good condition.

☒ Result: The operator's manual is not appropriate for the machine or the manual is not in good condition or is illegible. Remove the machine from service until the manual is replaced.

- 3 Open the operator's manual to the decals inspection section. Carefully and thoroughly inspect all decals on the machine for legibility and damage.

☉ Result: The machine is equipped with all required decals, and all decals are legible and in good condition.

☒ Result: The machine is not equipped with all required decals, or one or more decals are illegible or in poor condition. Remove the machine from service until the decals are replaced.

- 4 Always return the manual to the storage container after use.

Note: Contact your authorized DINGLI distributor or DINGLI Industries if replacement manuals or decals are needed.

Maintenance

A-2

Perform Pre-operation Inspection

Completing a Pre-operation Inspection is essential to safe machine operation. The Pre-operation Inspection is a visual inspection performed by the operator prior to each work shift. The inspection is designed to discover if anything is apparently wrong with a machine before the operator performs the function tests. The Pre-operation Inspection also serves to determine if routine maintenance procedures are required.

Complete information to perform this procedure is available in the appropriate operator's manual. Refer to the Operator's Manual on your machine.

A-3

Check the Batteries



Proper battery condition is essential to good engine performance and operational safety. Improper fluid levels or damaged cables and connections can result in engine component damage and hazardous conditions.

⚠ WARNING Electrocution hazard. Contact with hot or live circuits may result in death or serious injury. Remove all rings, watches and other jewelry.

⚠ WARNING Bodily injury hazard. Batteries contain acid. Avoid spilling or contacting battery acid. Neutralize battery acid spills with baking soda and water.

- 1 Put on protective clothing and eye wear.
- 2 Be sure that the battery cable connections are tight and free of corrosion.
- 3 Be sure that the battery hold-down bars are secure.
- 4 Remove the battery vent caps.
- 5 Check the battery acid level. If needed, replenish with distilled water to the bottom of the battery fill tube. Do not overfill.
- 6 Install the vent caps.

Maintenance

A-4

Check the Engine Oil Level



Maintaining the proper engine oil level is essential to good engine performance and service life.

Operating the machine with an improper oil level can damage engine components.

NOTICE

Check the oil level with the engine off.

- 1 Open the engine cover
- 2 Release the latches on the engine tray and fully rotate out
- 3 Check the oil level dipstick. Add oil as needed.

Oil type	5W-30
Oil type – cold conditions	0W-20

A-5

Check the Hydraulic Oil Level



Maintaining the hydraulic oil at the proper level is essential to machine operation. Improper hydraulic oil levels can damage hydraulic components. Daily checks allow the inspector to identify changes in oil level that might indicate the presence of hydraulic system problems.

NOTICE

Perform this procedure with the platform in the stowed position and the engine off.

- 1 Visually inspect the sight of hydraulic oil level from the side of the hydraulic oil tank.
⊙ Result: The hydraulic oil level should be within the top 5 cm of the tank.
- 2 Add oil if necessary. Do not overfill.

Hydraulic oil specifications

Hydraulic oil type	L-HV46
--------------------	--------

Maintenance

A-6

Check the Engine Coolant Level



Maintaining the engine coolant at the proper level is essential to engine service life. Improper coolant level will affect the engine's cooling capability and damage engine components. Daily checks will allow the inspector to identify changes in coolant level that might indicate cooling system problems.

Check the fluid level in the radiator. Add fluid as needed.

⚠ WARNING Bodily injury hazard. Fluids in the radiator are under pressure and extremely hot. Use caution when removing cap and adding fluids.

A-7

Perform Function Tests

Completing the function tests is essential to safe machine operation. Function tests are designed to discover any malfunctions before the machine is put into service. A malfunctioning machine must never be used. If malfunctions are discovered, the machine must be tagged and removed from service.

Complete information to perform this procedure is available in the appropriate operator's manual. Refer to the Operator's Manual on your machine.

A-8

Perform Engine Maintenance



Engine specifications require that this procedure be performed every 8 hours or daily, whichever comes first.

Required maintenance procedures and additional engine information is available in the engine operator's manual.

A-9

Perform Drive Axle Maintenance



Axle specifications require that this procedure be performed every 8 hours or daily, whichever comes first.

Required maintenance procedures and additional Axle information is available in the Axle operator's manual.

Maintenance

A-10

Perform 30 Day Service



The 30 day maintenance procedure is a one time procedure to be performed after the first 30 days or 40 hours of usage. After this interval, refer to the maintenance tables for continued scheduled maintenance.

- 1 Perform the following maintenance procedures:
 - B-6 Inspect the Tires and Wheels (including lug nut torque)
 - B-15 Perform Engine Maintenance

A-12

Perform Drive Axle Maintenance



Axle specifications require that this procedure be performed every 100 hours.

Required maintenance procedures and additional Axle information is available in the Axle operator's manual.

A-11

Perform Engine Maintenance



Engine specifications require that this one-time procedure be performed after 50 hours of operation.

Required maintenance procedures and additional engine information is available in the engine operator's manual.

Maintenance**Checklist B Procedures****B-1****Inspect the Batteries**

DINGLI requires that this procedure be performed every 250 hours or quarterly, whichever comes first.

Proper battery condition is essential to good machine performance and operational safety. Improper fluid levels or damaged cables and connections can result in component damage and hazardous conditions.

⚠ WARNING

Electrocution / burn hazard. Contact with electrically charged circuits could result in death or serious injury. Remove all rings, watches and other jewelry.

⚠ WARNING

Bodily injury hazard. Batteries contain acid. Avoid spilling or contacting battery acid. Neutralize battery acid spills with baking soda and water.

- 1 Put on protective clothing and eye wear.
- 2 Be sure that the battery cable connections are free of corrosion.

Note: Adding terminal protectors and a corrosion preventative sealant will help eliminate corrosion on the battery terminals and cables.

- 3 Be sure that the battery retainers and cable connections are tight.
- 4 Fully charge the battery. Allow the battery to rest 24 hours before performing this procedure to allow the battery cells to equalize.

Models without maintenance-free or sealed batteries:

- 5 Remove the battery vent caps and check the specific gravity of each battery cell with a hydrometer. Note the results.

- 6 Check the ambient air temperature and adjust the specific gravity reading for each cell as follows:

- Add 0.004 to the reading of each cell for every 5.5° C above 26.7° C.
- Subtract 0.004 from the reading of each cell for every 5.5° C below 26.7° C.

- ⊙ Result: All battery cells display an adjusted specific gravity of 1.277 or higher. The battery is fully charged. Proceed to step 10.

- ⊗ Result: One or more battery cells display a specific gravity of 1.217 or below. Proceed to step 7.

- 7 Perform an equalizing charge OR fully charge the batteries and allow the battery to rest at least 6 hours.
- 8 Remove the battery vent caps and check the specific gravity of each battery cell with a hydrometer. Note the results.
- 9 Check the ambient air temperature and adjust the specific gravity reading for each cell as follows:

- Add 0.004 to the reading of each cell for every 5.5° C above 26.7° C.
- Subtract 0.004 from the reading of each cell for every 5.5° C below 26.7° C.

- ⊙ Result: All battery cells display a specific gravity of 1.277 or greater. The battery is fully charged. Proceed to step 10.

- ⊗ Result: The difference in specific gravity readings between cells is greater than 0.1 OR the specific gravity of one or more cells is less than 1.217. Replace the battery.

Maintenance

10 Check the battery acid level. If needed, replenish with distilled water to 1/8 inch | 3 mm below the bottom of the battery fill tube. Do not overfill.

11 Install the vent caps and neutralize any electrolyte that may have spilled.

All models:

12 Check each battery pack and verify that the batteries are wired correctly.

13 Inspect the battery charger plug and pigtail for damage or excessive insulation wear. Replace as required.

14 Connect the battery charger to a properly grounded 110 - 230V / 50 – 60 Hz single phase AC power supply.

⊙ Result: The charger should operate and begin charging the batteries.

⊗ Result: If, simultaneously, the charger alarm sounds and the LEDs blink, correct the charger connections at the fuse and battery. The charger will then operate correctly and begin charging the batteries.

Note: For best results, use an extension of adequate size with a length no longer than 15m.

Note: If you have any further questions regarding the battery charger operation, please contact the DINGLI Service Department.

B-2

Inspect the Electrical Wiring



DINGLI requires that this procedure be performed every 250 hours or quarterly, whichever comes first.

Maintaining electrical wiring in good condition is essential to safe operation and good machine performance. Failure to find and replace burnt, chafed, corroded or pinched wires could result in unsafe operating conditions and may cause component damage.

⚠ WARNING Electrocution / burn hazard. Contact with electrically charged circuits could result in death or serious injury. Remove all rings, watches and other jewelry.

- 1 Inspect the underside of the chassis for damaged or missing ground strap(s).
- 2 Inspect the following areas for burnt, chafed, corroded and loose wires:
 - Ground control panel
 - Hydraulic power unit module tray
 - Battery pack module tray
 - Platform controls
 - Engine
- 3 Inspect for a liberal coating of dielectric grease in the following locations:
 - Between the ECM and platform controls
 - Engine ECM
 - All wire harness connectors
 - Level sensor
- 4 Turn the key switch to ground control and pull out the red Emergency Stop button to the on position at both the ground and platform controls.

Maintenance

- 5 Start the engine from the ground controls and raise the platform approximately 5.5m from the ground.
- 6 Release the safety arm latch, lift the safety arm and rotate up to a vertical position.
- 7 Lower the platform onto the safety arm. Stop the engine.

⚠ WARNING Crushing hazard. Keep hands clear of the safety arm when lowering the platform.

- 8 Inspect the center chassis area and scissor arms for burnt, chafed and pinched cables.
- 9 Inspect the following areas for burnt, chafed, corroded, pinched and loose wires:
 - Scissor arms
 - ECM to platform controls
 - Power to platform wiring
- 10 Inspect for a liberal coating of dielectric grease in all connections between the ECM and the platform controls.
- 11 Raise the platform and return the safety arm to the stowed position.
- 12 Lower the platform to the stowed position and turn the machine off.

B-3

Check the Exhaust System



Dingli requires that this procedure be performed every 250 hours or quarterly, whichever comes first.

Maintaining the exhaust system is essential to good engine performance and service life. Running the engine with a damaged or leaking exhaust system can cause component damage and unsafe operating conditions.

⚠ WARNING Bodily injury hazard. Do not inspect while the engine is running. Remove the key to secure from operation.

⚠ CAUTION Bodily injury hazard. Beware of hot engine components. Contact with hot engine components may cause severe burns.

- 1 Open the cover.
- 2 Be sure that all fasteners are tight.
- 3 Inspect all welds for cracks.
- 4 Inspect for exhaust leaks; i.e., carbon buildup around seams and joints.

Maintenance

B-4

Inspect the Tires and Wheels



Dingli requires that this procedure be performed every 250 hours or quarterly, whichever comes

Maintaining the tires and wheels in good condition is essential to safe operation and good performance. Tire and/or wheel failure could result in a machine tip-over. Component damage may also result if problems are not discovered and repaired in a timely fashion.

- 1 Check all tire treads and sidewalls for cuts, cracks, punctures and unusual wear.
- 2 Check each wheel for damage, bends and cracks.
- 3 Check each lug nut for proper torque.

lug nut torque, dry	600Nm
lug nut torque, lubricated	450Nm

B-5

Check the Oil Level in the Drive Hubs



Dingli requires that this procedure be performed every 250 hours or quarterly, whichever comes

Failure to maintain proper drive hub oil levels may cause the machine to perform poorly and continued use may cause component damage.

- 1 Before draining oil it is mandatory to rotate the planetary gear reduction in order to move the oil plug in filling position, then loosen the oil plug and wait until the internal pressure is completely released.
- 2 Remove the plug located and check the oil level.
- ⊙ Result: The oil level should be even with the bottom of the plug hole.
- 3 If necessary, remove the plug and add oil until the oil level.
- 4 Apply pipe thread sealant to the plug(s), and then install the plug(s) in the drive hub.
- 5 Repeat this procedure for each drive hub.

Maintenance

B-6

Test the Key Switch

Dingli requires that this procedure be performed every 250 hours or quarterly, whichever comes first.

Proper key switch action and response is essential to safe machine operation. Failure of the key switch to activate the appropriate control panel could cause a hazardous operating situation.

- 1 Pull out the red Emergency Stop button to the on position at both the ground and platform controls.
- 2 Turn the key switch to ground controls and start the engine.
- 3 Check any machine function from the platform controls.
- ⊙ Result: The machine functions should not operate.
- 4 Turn the key switch to platform controls and start the engine.
- 5 Check any machine function from the ground controls.
- ⊙ Result: The machine functions should not operate.
- 6 Turn the key switch to the off position.
- ⊙ Result: The engine should stop and no functions should operate.

B-7

Test the Emergency Stop

Dingli requires that this procedure be performed every 250 hours or quarterly, whichever comes first.

A properly functioning Emergency Stop is essential for safe machine operation. An improperly operating red Emergency Stop button will fail to shut off power and stop all machine functions, resulting in a hazardous situation.

As a safety feature, selecting and operating the ground controls will override the platform controls, except the platform red Emergency Stop button.

- 1 Start the engine from ground controls.
- 2 Push in the red Emergency Stop button to the off position.
- ⊙ Result: The engine should shut off and no machine functions should operate.
- 3 Start the engine from platform controls.
- 4 Push in the red Emergency Stop button to the off position.
- ⊙ Result: The engine should shut off and no machine functions should operate.

Note: The red Emergency Stop button at the ground or platform controls will stop all machine operation without regard to the position of the key switch.

Maintenance

B-8

Test the Automotive-style Horn

Dingli requires that this procedure be performed every 250 hours or quarterly, whichever comes first.

A functional horn is essential to safe machine operation. The horn is activated at the platform controls and sounds at the ground as a warning to ground personnel. An improperly functioning horn will prevent the operator from alerting ground personnel of hazards or unsafe conditions.

- 1 Turn the key switch to platform controls
- 2 Pull out the platform red Emergency Stop button to the on position.
- 3 Turn the red Emergency Stop button clockwise to the on position.
- 4 Push down the horn button at the platform controls.

☉ Result: The horn should sound.

B-9

Test the Drive Brakes



Dingli requires that this procedure be performed every 250 hours or quarterly, whichever comes first.

Proper brake action is essential to safe machine operation. The drive brake function should operate smoothly, free of hesitation, jerking and unusual noise.

Hydraulically-released individual wheel brakes can appear to operate normally when they are actually not fully operational.

- 1 Mark a test line on the ground for reference.
- 2 Start the engine from the platform controls.
- 3 Choose a point on the machine; i.e., contact patch of a tire, as a visual reference for use when crossing the test line.
- 4 Bring the machine to top drive speed before reaching the test line. Release the function enable switch on the control handle or release the control handle when your reference point on the machine crosses the test line.
- 5 Measure the distance between the test line and your machine reference point.

☉ Result: The machine stops within the specified braking distance. No action required.

☒ Result: The machine does not stop within the specified braking distance.

Note: The brakes must be able to hold the machine on any slope it is able to climb.

- 6 Replace the brakes and repeat this procedure beginning with step 1.

Braking distance, maximum

High range on paved surface 270cm

Maintenance**B-10****Test the Drive Speed - Stowed Position**

Dingli requires that this procedure be performed every 250 hours or quarterly, whichever comes

Proper drive function movement is essential to safe machine operation. The drive function should respond quickly and smoothly to operator control. Drive performance should also be free of hesitation, jerking and unusual noise over the entire proportionally control led speed range.

- 1 Create start and finish lines by marking two lines on the ground 12.2m apart.
- 2 Turn the key switch to platform controls
- 3 Pull out the platform red Emergency Stop button to the on position.
- 4 Turn the red Emergency Stop button clockwise to the on position.
- 5 Start the engine from the platform controls.
- 6 Lower the platform to the stowed position.
- 7 Choose a point on the machine; i.e., contact patch of a tire, as a visual reference for use when crossing the start and finish lines.
- 8 Bring the machine to maximum drive speed before reaching the start line. Begin timing when your reference point on the machine crosses the start line.
- 9 Continue at full speed and note the time when the machine reference point passes over the finish line. The time is less than 6.6 sec.

B-11**Test the Drive Speed -Raised Position**

Dingli requires that this procedure be performed every 250 hours or quarterly, whichever comes first.

Proper drive function movement is essential to safe machine operation. The drive function should respond quickly and smoothly to operator control. Drive performance should also be free of hesitation, jerking and unusual noise over the entire proportionally control led speed range.

- 1 Create start and finish lines by marking two lines on the ground 12.2m apart.
- 2 Turn the key switch to platform controls
- 3 Pull out the platform red Emergency Stop button to the on position.
- 4 Turn the red Emergency Stop button clockwise to the on position.
- 5 Start the engine from the platform controls.
- 6 Press and hold the function enable button. Raise the platform approximately 4.0m from the ground.
- 7 Choose a point on the machine; i.e., contact patch of a tire, as a visual reference for use when crossing the start and finish lines.
- 8 Bring the machine to maximum drive speed before reaching the start line. Begin timing when your reference point on the machine crosses the start line.
- 9 Continue at full speed and note the time when the machine reference point passes over the finish line. The time is less than 88 sec.

Maintenance

B-12

Perform Hydraulic Oil Analysis



Dingli requires that this procedure be performed every 250 hours or quarterly, whichever comes first.

Replacement or testing of the hydraulic oil is essential for good machine performance and service life. Dirty oil and a clogged suction strainer may cause the machine to perform poorly and continued use may cause component damage. Extremely dirty conditions may require oil changes to be performed more often.

Note: Before replacing the hydraulic oil, the oil may be tested by an oil distributor for specific levels of contamination to verify that changing the oil is necessary. If the hydraulic oil is not replaced at the two year inspection, test the oil quarterly. Replace the oil when it fails the test. See E-1, Test or Replace the Hydraulic Oil.

B-13

Perform Engine Maintenance



Engine specifications require that this procedure be performed every 250 hours or quarterly, whichever comes first.

Required maintenance procedures and additional engine information is available in the engine operator's manual.

B-14

Perform Drive Axle Maintenance



Axle specifications require that this procedure be performed every 250 hours or quarterly, whichever comes first.

Required maintenance procedures and additional Axle information is available in the Axle operator's manual.

Checklist C Procedures

C-1

Test the Platform Overload System



Dingli specifications require that this procedure be performed every 500 hours or semi-annually, whichever comes first OR when the machine fails to lift the maximum rated load.

Testing the platform overload system regularly is essential to safe machine operation. Continued use of an improperly operating platform overload system could result in the system not sensing an overloaded platform condition. Machine stability could be compromised resulting in the machine tipping over.

Note: Perform this procedure with the machine on a firm, level surface that is free of obstructions.

- 1 Turn the key switch to platform control and pull out the red Emergency Stop button to the on position at both the ground and platform controls.
 - 2 Determine the maximum platform capacity.
 - 3 Using a suitable lifting device, place an appropriate test weight equal to the maximum platform capacity in the center of the platform floor.
- ⊙ Result: The overload alarm at the platform controls should not sound, indicating a normal condition.
 - ⊗ Result: The overload alarm at the platform controls sounds. Calibrate the platform overload system.
- 4 Add an additional weight to the platform not to exceed 10% of the maximum rated load.

- ⊙ Result: The overload alarm at the platform controls sound, indicating a normal condition.
 - ⊗ Result: The overload alarm at the platform controls does not sound. Calibrate the platform overload system.
- 5 Test all machine functions from the platform controls.
- ⊙ Result: All platform control functions should not operate.
- 6 Turn the key switch to ground control.
 - 7 Test all machine functions from the ground controls
- ⊙ Result: All ground control functions should not operate.
- 8 Lift the test weight off the platform floor using a suitable lifting device.
- ⊙ Result: The overload alarm at the platform controls should not sound, indicating a normal condition.
 - ⊗ Result: The overload alarm at the platform controls sounds. Calibrate the platform overload system.
- 9 Test all machine functions from the ground controls.
- ⊙ Result: All ground control functions should operate.
- 10 Turn the key switch to platform control.
 - 11 Test all machine functions from the platform controls.
- ⊙ Result: All platform control functions should operate.

Maintenance

C-2

Perform Engine Maintenance



Engine specifications require that this procedure be performed every 500 hours or semi-annually, whichever comes first.

Required maintenance procedures and additional engine information is available in the engine operator's manual.

C-3

Perform Drive Axle Maintenance



Axle specifications require that this procedure be performed every 500 hours

Required maintenance procedures and additional Axle information is available in the Axle operator's manual.

Checklist D Procedures

D-1

Replace the Hydraulic Tank Return Filter Element



DINGLI requires that this procedure be performed every 1000 hours or annually, whichever comes first.

Replacement of the hydraulic tank return filter is essential for good machine performance and service life. A dirty or clogged filter may cause the machine to perform poorly and continued use may cause component damage. Extremely dirty conditions may require that the filter be replaced more often.

⚠ CAUTION

Beware of hot oil. Contact with hot oil may cause severe burns.

- 1 Raise the platform, use the Safety Arm.
- 2 Open the cover.
- 3 Tag and disconnect the hydraulic tank return line .Cap the fitting on the filter head.
- 4 Clean the area around the oil filter.
Remove the filter with an oil filter wrench.
- 5 Apply a thin layer of oil to the new oil filter gasket.
- 6 Install the new filter and tighten it securely by hand.
- 7 Use a permanent ink marker to write the date and number of hours from the hour meter onto the filter.
- 8 Turn the key switch to ground control and pull out the red Emergency Stop button to the on position at both the ground and platform controls.
- 9 Activate and hold the platform up toggle switch.
- 10 Inspect the filter and related components to be sure that there are no leaks.
- 11 Clean up any oil that may have spilled.

Maintenance

D-2

Check the Free-wheel Configuration



Dingli specifications require that this procedure be performed every 1000 hours or annually, whichever comes first.

Proper use of the free-wheel configuration is essential to safe machine operation. The free-wheel configuration is used primarily for towing. A machine configured to free-wheel without operator knowledge may cause death or serious injury and property damage.

⚠ WARNING Collision hazard. Select a work site that is firm and level.

NOTICE Component damage hazard. If the machine must be towed, do not exceed 6.6km/h.

- 1 Chock the wheels at the steer end of the machine.
- 2 Center a lifting jack of ample capacity (30,000 lbs / 15,000 kg) under the drive chassis between the wheels at the non-steer end of the machine.
- 3 Lift the wheels off the ground and place blocks under the drive chassis for support.

⚠ WARNING Crushing hazard. The chassis could fall if not properly supported.

- 4 Release the brake.
- 5 Manually rotate each wheel at the non-steer end.
- ⊙ Result: Each wheel should rotate with minimum effort.
- 6 Reset the brake. Rotate each wheel to check for engagement. Raise the machine and remove the blocks. Lower the machine.
- 7 Chock the wheels at the non-steer end of the machine.

- 8 Center a lifting jack of ample capacity (30,000 lbs / 15,000 kg) under the drive chassis between the wheels at the steer end.
- 9 Lift the wheels off the ground and place blocks under the drive chassis for support.

⚠ WARNING Crushing hazard. The chassis could fall if not properly supported.

- 10 Release the brake.
- 11 Manually rotate each wheel at the steer end.
- ⊙ Result: Each wheel should rotate with minimum effort.
- 12 Reset the brake. Rotate each wheel to check for engagement. Raise the machine and remove the blocks. Lower the machine.

Maintenance

D-3

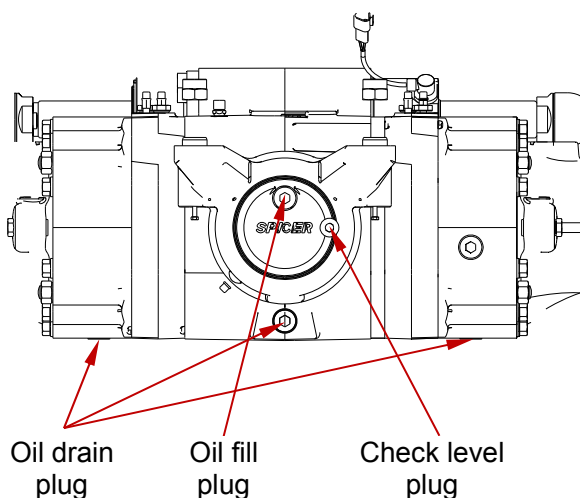
Replace the Drive Axle Oil



Dingli specifications require that this procedure be performed every 1000 hours or annually, whichever comes first.

Replacing the drive Axle oil is essential for good machine performance and service life. Failure to replace the drive Axle oil at yearly intervals may cause the machine to perform poorly and continued use may cause component damage.

- 1 Remove the oil draining plug and drain oil only when the pressure is completely released. Install the plug when the oil is fully discharged.
- 2 Remove the oil fill plug and check level plug.
- 3 Fill the oil fill plug hole until the oil level is even with the bottom of the side check level plug hole. Apply pipe thread sealant to the plugs. Install the plugs.
- 4 Repeat steps 1 through 3 for all the other Drive Axles



Oil specifications

Oil type	API GL4 or GL5
----------	----------------

D-4

Perform Engine Maintenance



Engine specifications require that this procedure be performed every 1000 hours or annually, whichever comes first.

Required maintenance procedures and additional engine information is available in the engine operator's manual.

D-5

Perform Drive Axle Maintenance



Axle specifications require that this procedure be performed every 1000 hours or annually, whichever comes first.

Required maintenance procedures and additional Axle information is available in the Axle operator's manual.

Maintenance

Checklist E Procedures

E-1

Test or Replace the Hydraulic Oil



DINGLI requires that this procedure be performed every 2000 hours or every two years, whichever comes first.

Replacement or testing of the hydraulic oil is essential for good machine performance and service life. Dirty oil and suction strainers may cause the machine to perform poorly and continued use may cause component damage. Extremely dirty conditions may require oil changes to be performed more frequently.

NOTICE

Component damage hazard.

The work area and surfaces where this procedure will be performed must be clean and free of debris that could get into the hydraulic system.

Before replacing the hydraulic oil, the oil may be tested by an oil distributor for specific levels of contamination to verify that changing the oil is necessary. If the hydraulic oil is not replaced at the two year inspection, test the oil quarterly. Replace the oil when it fails the test.

In extreme cold conditions, -6°C and below, warm the engine for 5 minutes before operating to prevent hydraulic system damage.

⚠ WARNING

Electrocution / burn hazard: Contact with electrically charged circuits could result in death or serious injury. Remove all rings, watches and other jewelry.

⚠ WARNING

Bodily injury hazard. Spraying hydraulic oil can penetrate and burn skin. Loosen hydraulic connections very slowly to allow the oil pressure to dissipate gradually. Do not allow oil to squirt or spray.

- 1 Disconnect the battery pack from the machine.
- 2 Open the power unit module cover.
- 3 Remove the oil drain plug at bottom Drain all of the oil into a suitable container.
- 4 Tag and disconnect the hydraulic tank return line from the hydraulic filter head and remove the line from the tank. Cap the fitting on the filter head.
- 5 Tag and disconnect the hydraulic pump inlet line and remove the line from the tank. Cap the fitting on the pump.
- 6 Remove the hydraulic tank retaining fasteners and remove the hydraulic tank from the machine.
- 7 Remove the breather cap from the hydraulic tank.
- 8 Clean the inside of the hydraulic tank using a mild solvent. Allow the tank to dry completely.
- 9 Tighten the drain plug.
- 10 Install the breather cap onto the hydraulic tank.
- 11 Install the hydraulic tank and install and tighten the hydraulic tank retaining fasteners.
- 12 Install the hydraulic pump inlet line into the tank. Install the fitting onto the pump and torque.
- 13 Install the hydraulic pump return line into the tank. Install the fitting onto the hydraulic filter head and torque.

Maintenance

- 14 Add the tank with hydraulic oil until the fluid is equal in the hydraulic tank. .

WARNING

Component damage hazard.

The pump can be damaged if operated without oil. Be careful not to empty the hydraulic tank while in the process of filling the hydraulic system. Do not allow the pump to cavitate.

E-2

Perform Engine Maintenance



Engine specifications require that this procedure be performed every 2000 hours or two years, whichever comes first.

Required maintenance procedures and additional engine information is available in the engine operator's manual.

E-3

Perform Engine Maintenance



Engine specifications require that this procedure be performed every 3000 hours,

Required maintenance procedures and additional engine information is available in the engine operator's manual.

E-4

Perform Engine Maintenance



Engine specifications require that this procedure be performed every 4000 hours,

Required maintenance procedures and additional engine information is available in the engine operator's manual.

Maintenance

E-5

Perform Engine Maintenance



Engine specifications require that this procedure be performed every 6000 hours.

Required maintenance procedures and additional engine information is available in the engine operator's manual.

E-6

Perform Engine Maintenance



Engine specifications require that this procedure be performed every 12,000 hours.

Required maintenance procedures and additional engine information is available in the engine operator's manual.

Maintenance**Fault State**

In the fault state, a fault code from the list will be displayed flashing at a 1 Hz rate (0.5 seconds on, 0.5 off).

List of Fault Codes

Display for Platform	Display for Ground	Description	Description
01	01 Internal ECU Fault	Main ECU System Fault	Replace Main ECU
02	02 Platform ECU Fault	ECU/Platform Communication Fault	Check the wiring, check the platform/ground
20	20 Chassis Start Sw Fault	Chassis Start Switch ON at power-up	Check the switch, check the wiring
21	21 Chassis Choke Sw Fault	Chassis Choke Switch ON at power-up	Check the switch, check the wiring
22	22 Chassis Up Sw Fault	Chassis Up Switch ON at power-up	Check the switch, check the wiring
23	23 Chassis Lift Sw Fault	Chassis Lift Switch ON at power-up	Check the switch, check the wiring
24	24 Chassis Down Sw Fault	Chassis Down Switch ON at power-up	Check the switch, check the wiring
25	25 Left Turn switch Fault	Platform Left Turn Switch ON at power-up	Check the switch, replace the platform
26	26 Right Turn switch Fault	Platform Right Turn Switch ON at power-up	Check the switch, replace the platform
27	27 Drive Enable Sw Flt	Platform Drive Enable Switch ON at power-up	Check the switch, replace the platform
28	28 Off Neutral Drive Joystick	Platform Joystick not in neutral ON at power-up	Check the switch, replace the platform
31	31 Platform Choke Sw Fault	Platform Choke Switch ON at power-up	Check the switch, replace the platform
32	32 Platform Start Sw Fault	Platform Start Switch ON at power-up	Check the switch, replace the platform
33	33 Left Front outrig Sw Flt	Platform Left Front Outrigger Enable Switch ON at power-up	Check the switch, replace the platform
34	34 Right Front outrig Sw Flt	Platform Right Front Outrigger Enable Switch ON at power-up	Check the switch, replace the platform
35	35 Left Rear outrig Sw Flt	Platform Left Rear Outrigger Enable Switch ON at power-up	Check the switch, replace the platform
36	36 Right Rear outrig Sw Flt	Platform Right Rear Outrigger Enable Switch ON at power-up	Check the switch, replace the platform
37	37 Auto Level Switch Fault	Platform Outrigger Auto Level Enable Switch ON at power-up	Check the switch, replace the platform

Maintenance

Display for Platform	Display for Ground	Description	Repair
38	38 LF OR Limit Switch Fault	Left Front Outrigger Limit Switches are both ON	Check the limit switch, check the wiring
39	39 RF OR Limit Switch Fault	Right Front Outrigger Limit Switches are both ON	Check the limit switch, check the wiring
40	40 LR OR Limit Switch Fault	Left Rear Outrigger Limit Switches are both ON	Check the limit switch, check the wiring
41	41 RR OR Limit Switch Fault	Right Rear Outrigger Limit Switches are both ON	Check the limit switch, check the wiring
49	49 Drive Coil 1 Fault	Power FET, channel DRIVE 1 fails	check the wiring, replace the valve
50	50 Drive Coil 2 Fault	Power FET, channel DRIVE 2 fails	check the wiring, replace the valve
51	51 Drive Coil 3 Fault	Power FET, channel DRIVE 3 fails	check the wiring, replace the valve
52	52 Func Prop Coil Fault	power FET, channel PROPORTIONAL 1 fails	check the wiring, replace the valve
54	54 Up Coil Fault	Power FET, channel DOWN fails	check the wiring, replace the valve
55	55 Down Coil Fault	Power FET, channel RT fails	check the wiring, replace the valve
56	56 Right Turn Coil Fault	Power FET, channel LT fails	check the wiring, replace the valve
57	57 Left Turn Coil Fault	Power FET, channel LT fails	check the wiring, replace the valve
58	58 Brake Coil Fault	Power FET, channel LT fails	check the wiring, replace the valve
60	60 Forward 1 Coil Fault	Power FET, channel FORWARD LEFT fails	check the wiring, replace the valve
61	61 Reverse 1 Coil Fault	Power FET, channel REVERSE LEFT fails	check the wiring, replace the valve
66	66 Low Oil Pressure	Oil Pressure Fault	check the wiring, replace the sensor
67	67 High Cool ant Temperature	Water Temperature Fault	check the wiring, replace the sensor
68	68 Low ECU Voltage	Low Battery Voltage	check the wiring, check the battery
69	69 Low Engine RPM	Low RPM Fault	check the wiring, check the engine
70	70 High Engine RPM	High RPM Fault	check the wiring, check the engine
81	81 Left Front Otrg Coil Flt	Power FET, channel LEFT FRONT OUTRIGGER fails	check the wiring, replace the valve

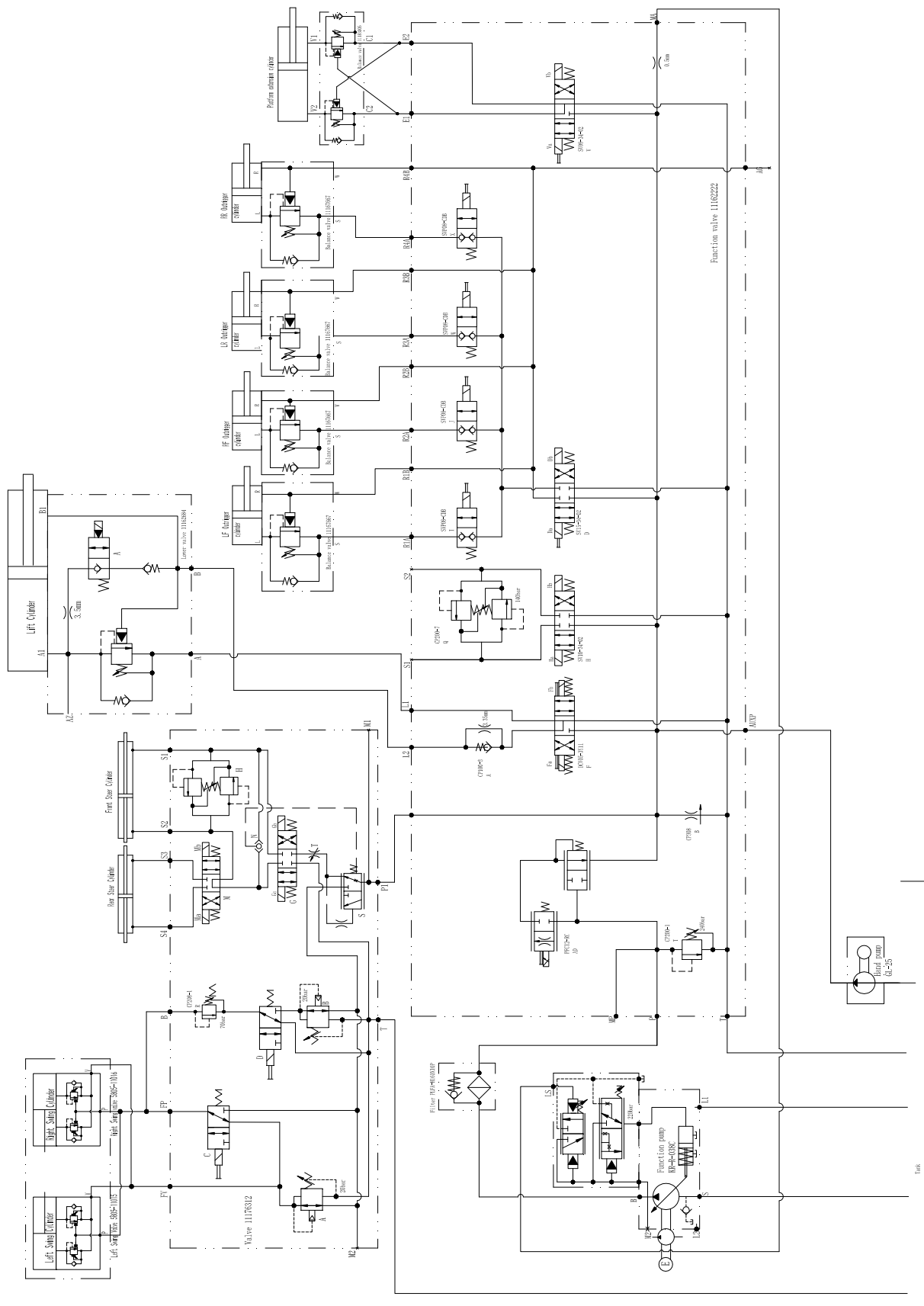
Maintenance

Display for Platform	Display for Ground	Description	Repair
82	82 Left Rear Otrg Coil Flt	Power FET, channel LEFT REAR OUTRIGGER fails	check the wiring, replace the valve
83	83 Right Front Otrg Coil Flt	Power FET, channel RIGHT FRONT OUTRIGGER fails	check the wiring, replace the valve
84	84 Right Rear Otrg Coil Flt	Power FET, channel RIGHT REAR OUTRIGGER fails	check the wiring, replace the valve
85	85 Outrigger Ext Coil Fit	Power FET, channel EXTEND OUTRIGGER fails	check the wiring, replace the valve
86	86 Outrigger Ret Coil Fit	Power FET, channel RETRACT OUTRIGGER fails	check the wiring, replace the valve
95	95 Machine Type Fault	Wrong Machine Type Selected	Reinstall Machine Type
OL	98 Platform Overload	Platform Overload Fault	Remove the excess load immediately.
LL		Machine Tilted Beyond Safe Limits Fault	check the wiring, replace the sensor

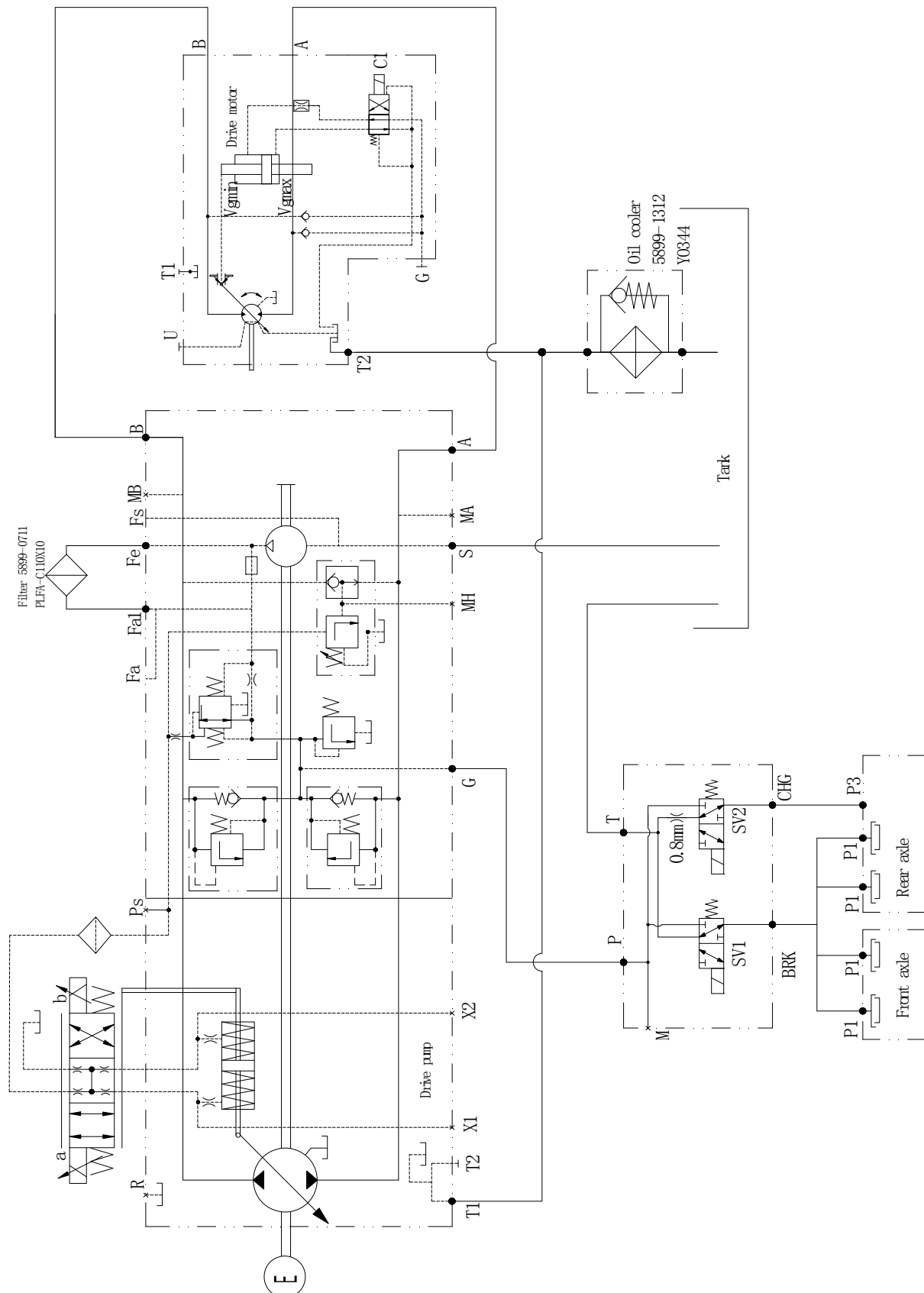
For more information, please consult the appropriate Dingli Service Dept.

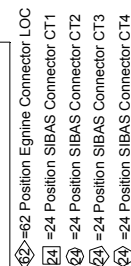
Schematic

Hydraulic Schematic - Function model



Hydraulic Schematic - Drive model





[illegible]